



Andromeda 2.0

User Manual



Summary

- Introduction
- Andromeda Software Installation
- Data Linker connection
- Andromeda updating
- Andromeda main features
- 4600 Alarm System tool
 - Firmware updating
 - Preliminary version
 - System configuration
 - Open or save a .cfg file
 - Firmware and Configuration Updating
 - DC – TX management
- 5365 software updating
- SCD20 CAN tools
 - Programming tool
 - Display



Introduction



- Andromeda is a software which allow you to program the CAN/PLIP applications, store the remote controls and driver cards, configure the functionalities of Vodafone alarm systems, update the software of the 5365 sirens and program the CAN application for SCD20 CAN.
- Andromeda includes a wide range of applications for all the vehicle equipped with CAN network.
- It also allows you to program the alarm system in PLIP configuration if the CAN application is not available.
- Andromeda configures the functionalities of the alarm system in according to customer requests.

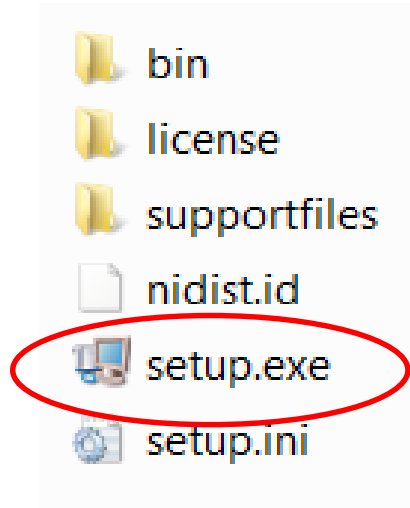


ANDROMEDA SOFTWARE INSTALLATION



Andromeda Software Installation

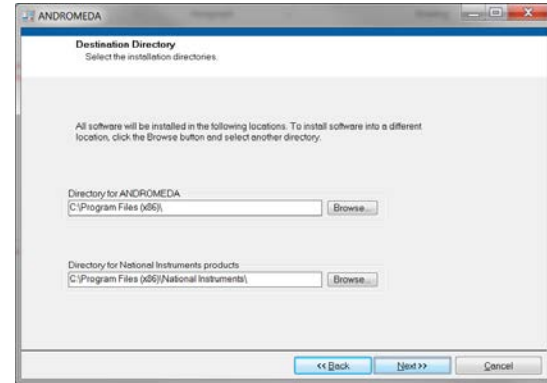
1. Insert the CD supplied with the Data Linker kit, open the Andromeda folder, click on “Setup” one time, then click on it with the right pushbutton of the mouse, and launch the installation “As Administrator”.
2. Note: during the Andromeda installation will be installed also the Data Linker drivers.



Andromeda Software Installation



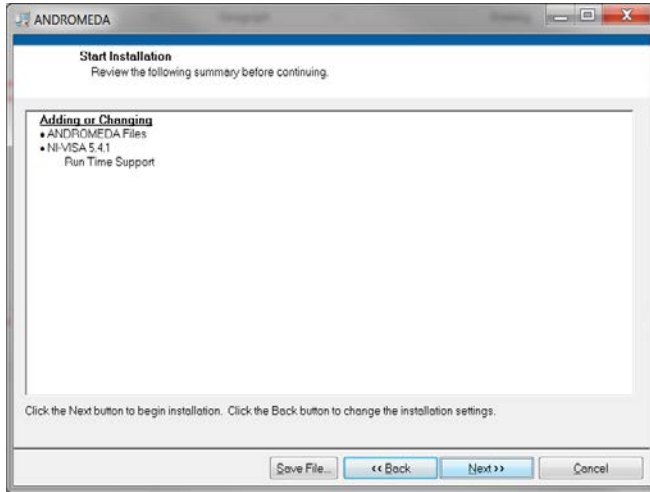
Click on «Next» to proceed.



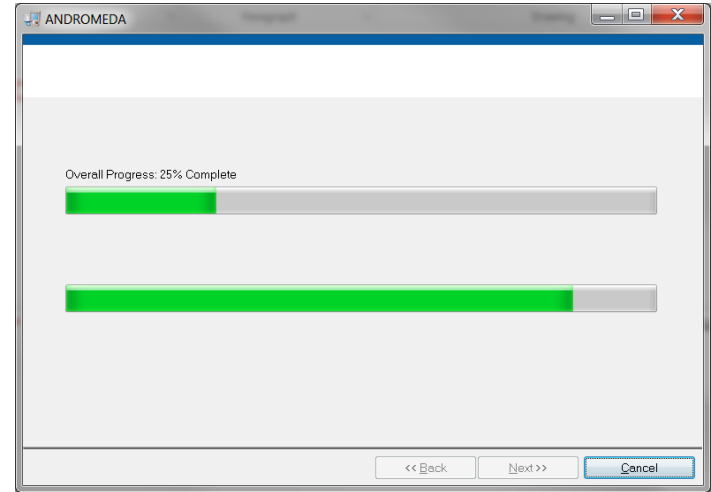
Click on «Next» to proceed.



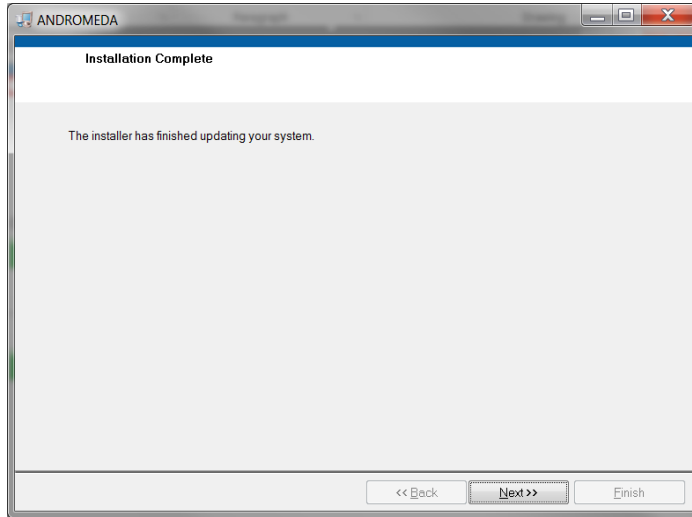
Andromeda Software Installation



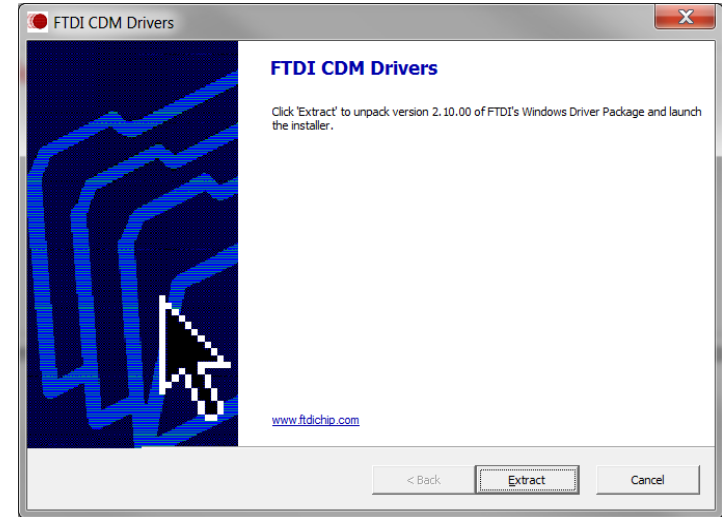
Click on «Next» to proceed.



Andromeda Software Installation



Click on «Next» to proceed.



Click on «Extract» to install the Data Linker drivers



Data Linker connections



- After having installed Andromeda, insert the Data Linker in the computer USB port.
- Connect to the Data Linker the specific wiring harness of the system to be programmed or configured.
- Connect the power supply to the wiring harness.
- Connect the wiring harness to the system.

! **Warning:** The power supply and the wiring harness are not included in the Data Linker kit, but they are separately supplied. Inside the Data Linker kit you will find the instructions and the accessories bag to modify the power supply connector



ANDROMEDA UPDATING



Andromeda Updating

Andromeda automatically updates itself after having launched it if the Internet connection is available.



Andromeda

Click on two times on the icon to launch «Andromeda» software.



Welcome to ANDROMEDA
Updating system... Please, wait!

Technical information are available in the "Professional Area"
at electronics.vodafone.com

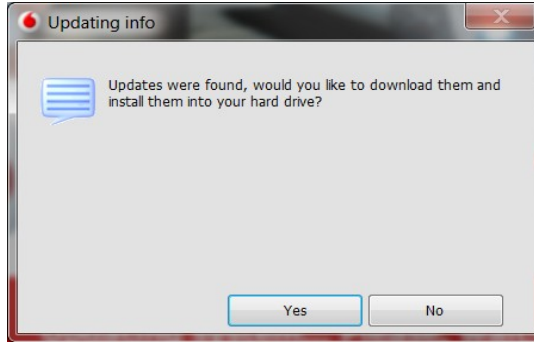


Vodafone Automotive SpA - All rights reserved

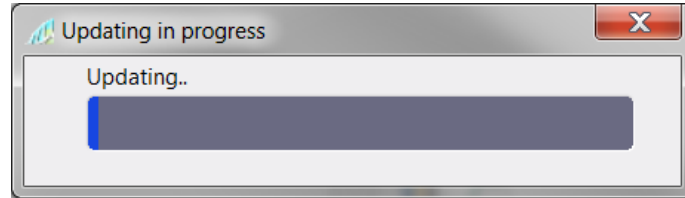
Andromeda controls if there are available updating



Andromeda Updating



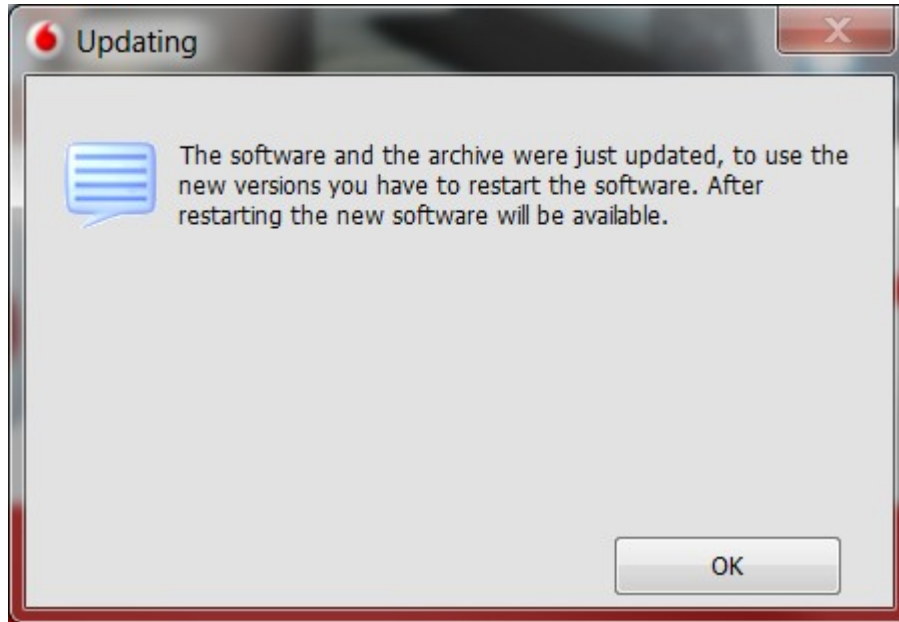
Click on «Yes» to download the new updating.



The new updating will be downloaded on your PC.



Andromeda Updating



Click on «Ok» the Andromeda software will be closed. After having re-launched the Andromeda software, the new updating will be available.



An aerial, top-down view of a large crowd of people gathered on a cobblestone street. The majority of the people are holding open umbrellas in a wide variety of colors, including red, blue, yellow, green, purple, and black. The umbrellas are scattered across the frame, creating a dense, colorful pattern. The cobblestone pavement is visible between the umbrellas. The overall scene suggests a rainy day event or a public gathering.

ANDROMEDA MAIN FEATURES



Andromeda main features



Andromeda

Launch Andromeda by clicking on two times on the available icon



Welcome to ANDROMEDA
Updating system... Please, wait!

Technical information are available in the "Professional Area"
at electronics.vodafone.com

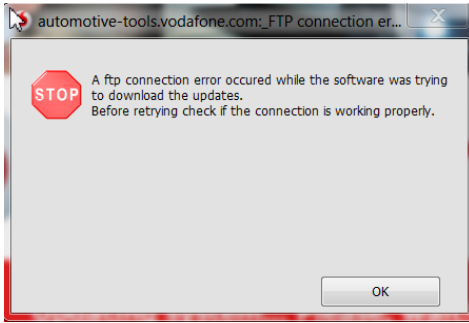


Vodafone Automotive SpA - All rights reserved

Andromeda controls if there are updating available on the server every time It is launched. (See section updating)



Andromeda main features



If Internet connection is not available, Andromeda shows this message, click «Ok» to proceed.



Click on «Start» to proceed.



Click on to the desired feature to proceed or exit to leave Andromeda software.



An aerial photograph of a winding road through a forest, with a small red car driving on it. The image is dark and has a blue tint. The text '4600 ALARM SYSTEM TOOLS' is overlaid in white, bold, sans-serif font.

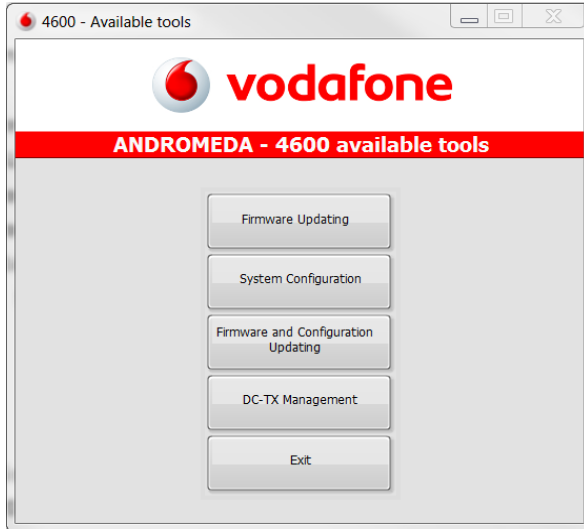
4600 ALARM SYSTEM TOOLS



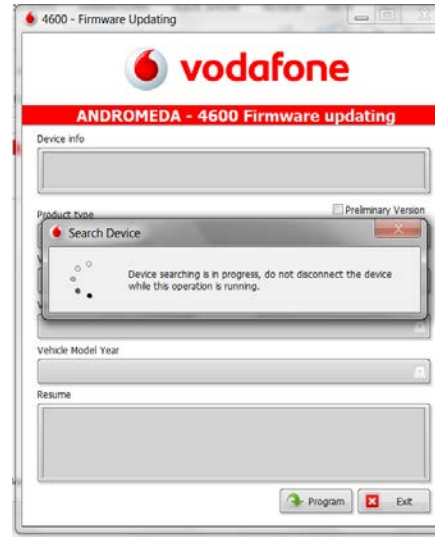
FIRMWARE UPDATING



Firmware updating



Click on «Firmware updating» to proceed.



Andromeda reads the stored firmware version.



Firmware updating



Open the drop menu and choose the product type



Open the drop menu and choose the vehicle brand.



Firmware updating

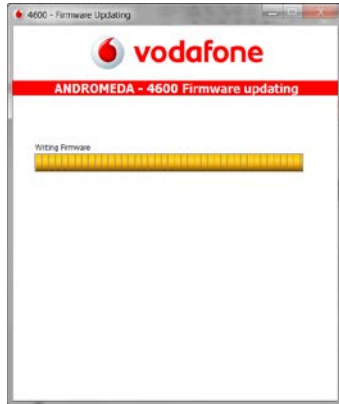
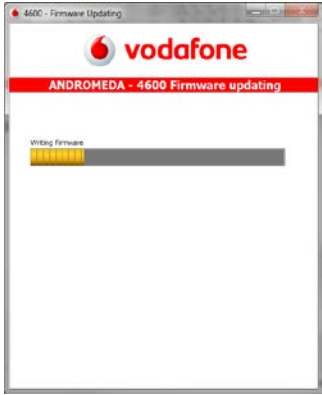


Open the drop menu and choose the vehicle model.

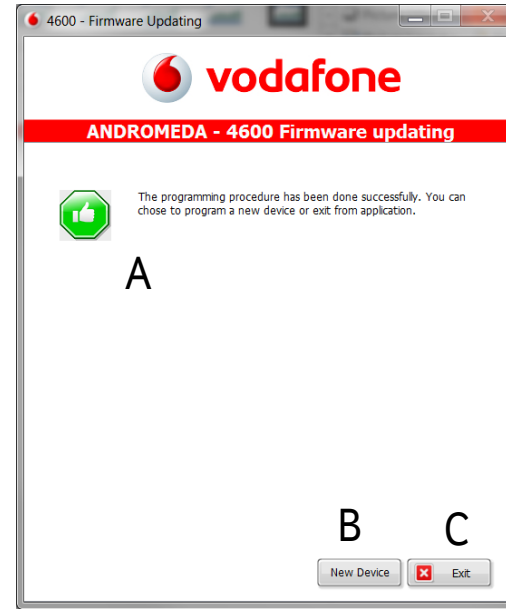
- Open the drop menu and choose the vehicle model year. Andromeda shows you all choices in the resume window.
- Click on program to proceed with installation.



Firmware updating



Andromeda shows you the status of the installation.



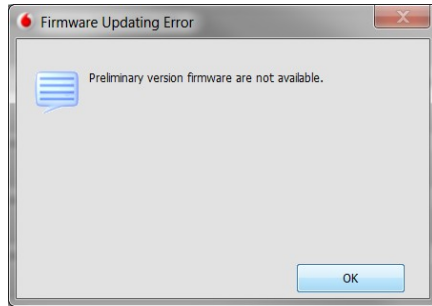
- (A) Andromeda confirms the programming procedure has been done successfully.
- (B) Click on «New Device» if you need to program a new product with the same firmware.
- (C) Click on «Exit» to leave the programming page



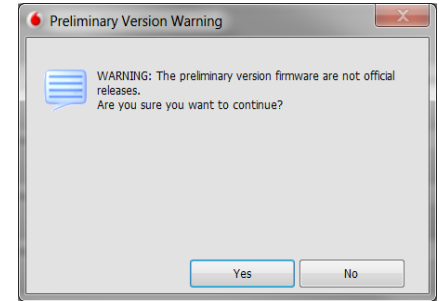
PRELIMINARY VERSION



Preliminary Version



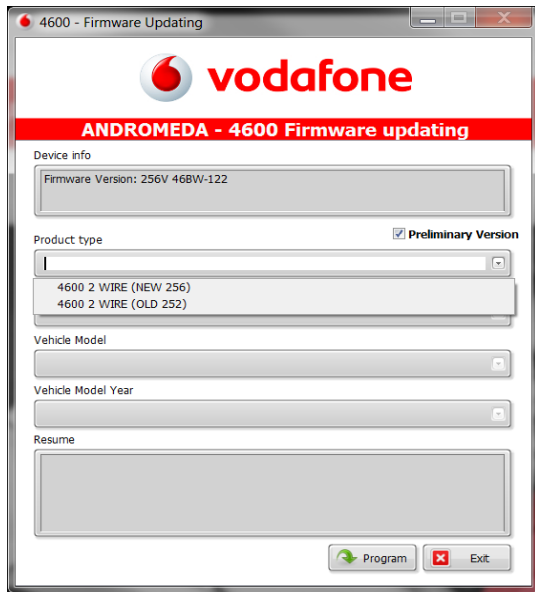
After having read the firmware version, you can select the «Preliminary Version», if there are no any firmware available Andromeda shows you an error. Click «OK» to leave the «Preliminary Version» page.



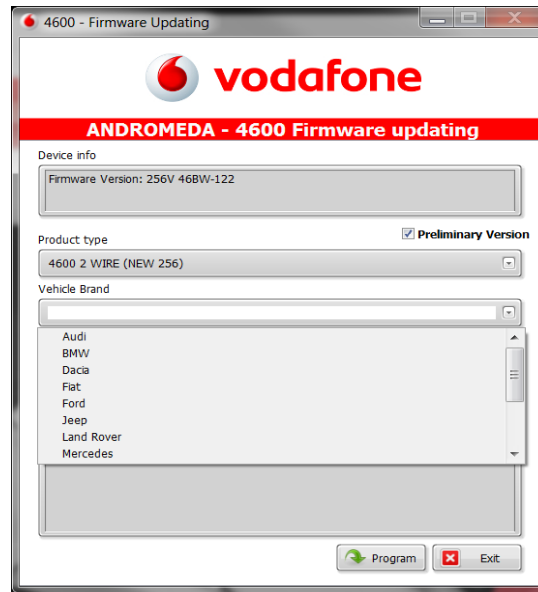
If a preliminary version is available, Andromeda informs you that the firmware are not official releases. Click on «Yes» to proceed.



Preliminary Version



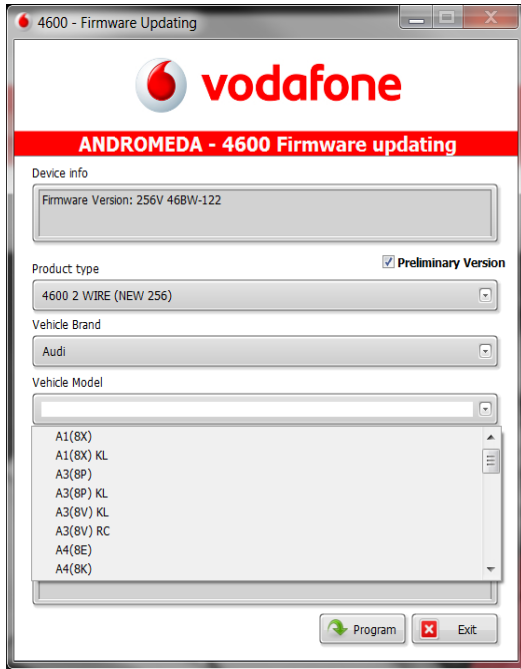
Open the drop menu and select the «Product Type».
And select (new 256)



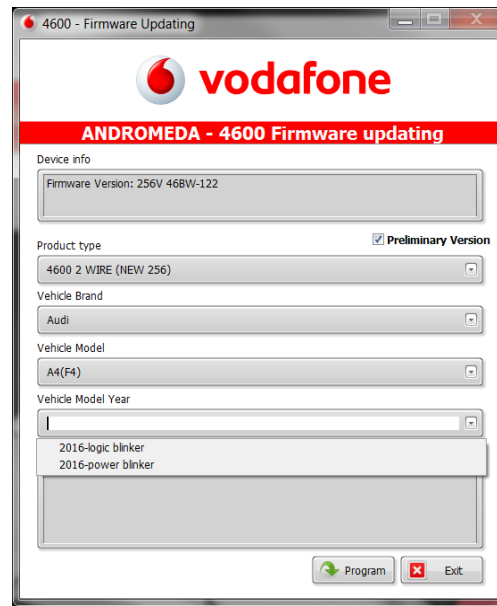
Open the drop menu and select the «Vehicle Brand»
available.



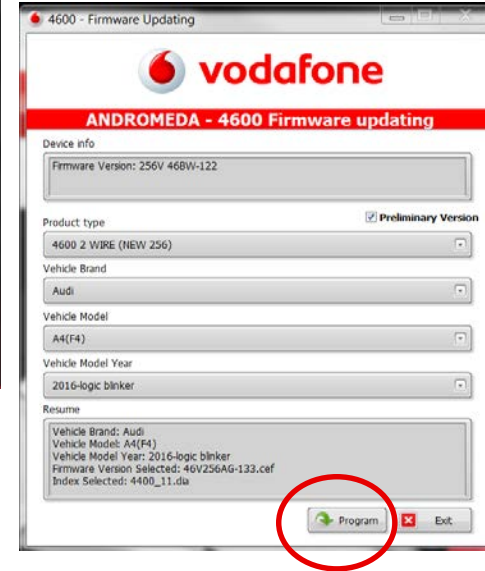
Preliminary Version



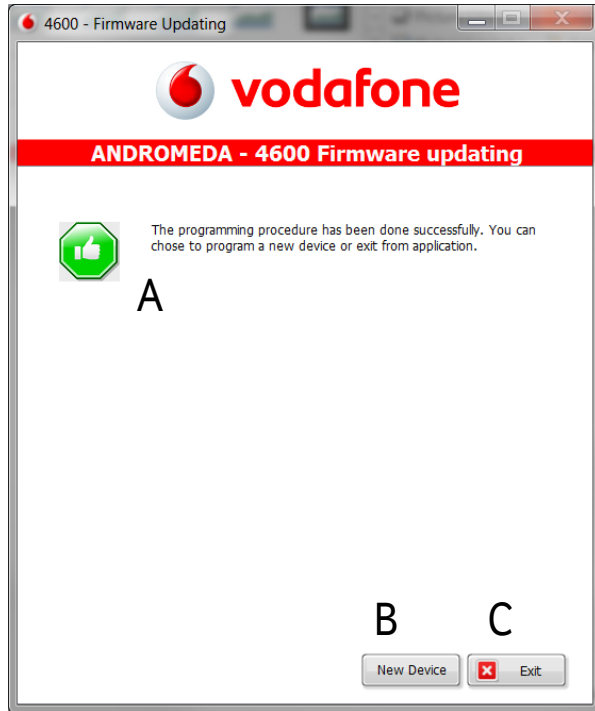
Open the drop menu and choose the «Vehicle Model».



Open the drop menu and choose the «Vehicle Model Year» and click on «Program».



Preliminary Version



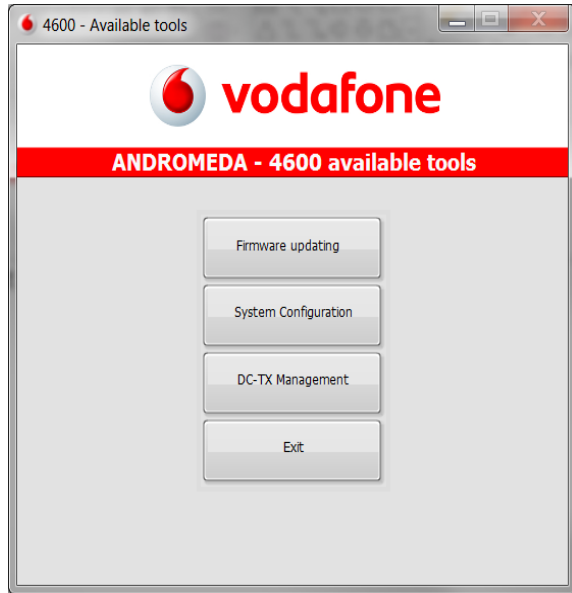
- (A) Andromeda confirms the programming procedure has been done successfully.
- (B) Click on «New Device» if you need to program a new product with the same firmware.
- (C) Click on «Exit» to leave the programming page



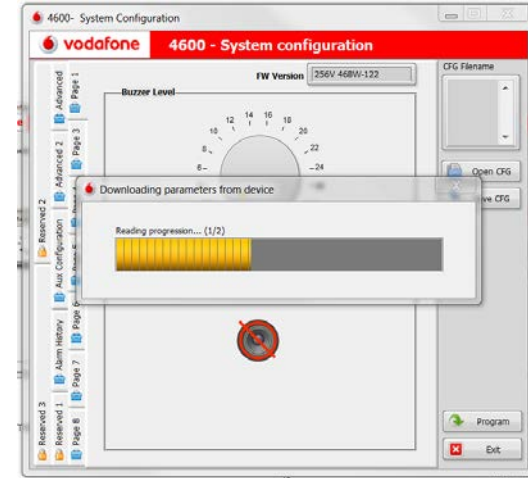
SYSTEM CONFIGURATION



System Configuration



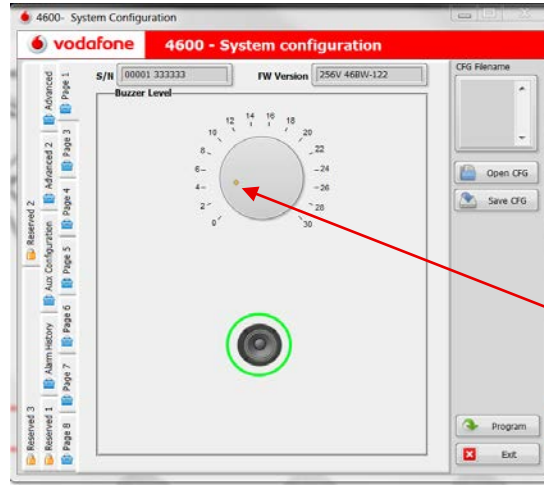
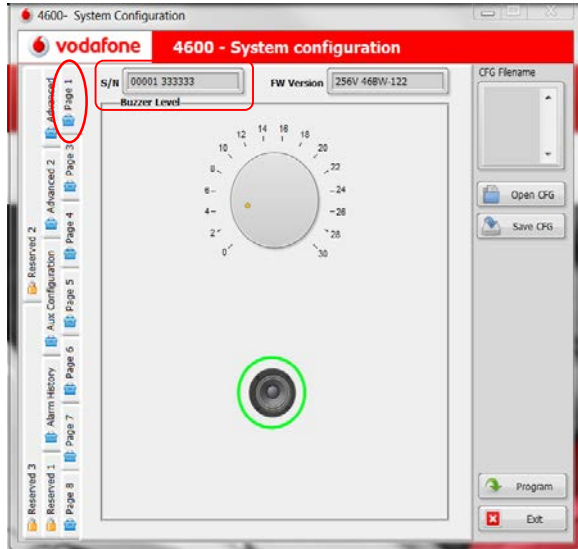
Click on «System Configuration»



Andromeda reading the product configuration

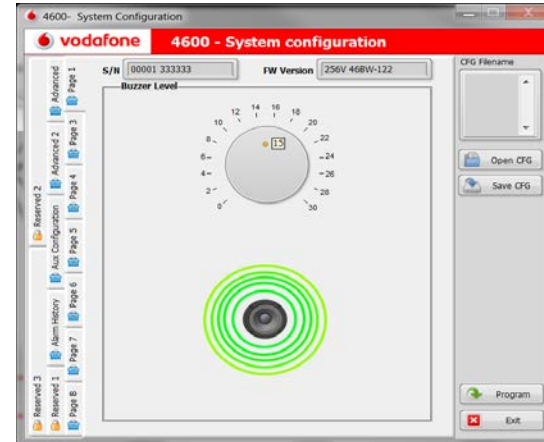


System Configuration – Page 1



To increase or decrease the buzzer level you have to move the yellow cursor.

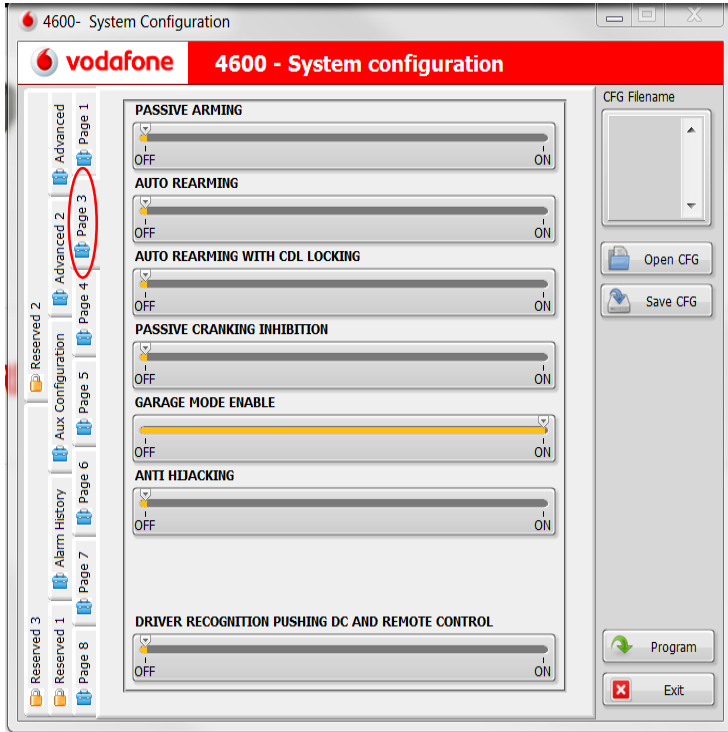
Remark: remember to activate the «Arming/disarming buzzer activation» to the page 6



Andromeda reading the serial number (S/N) of the central unit, this functionality is not available for products manufactured before October 2019.



System Configuration - Page 3



- **Passive Arming:** Default Off
- **Auto Rearming:** Default Off
- **Auto Rearming with CDL locking:** Default Off
- **Passive cranking inhibition:** Default Off
- **Garage mode enable:** Default Off
- **Anti-Hijacking:** Default Off
- **Driver Recognition pushing DC and remote control:** Default Off



System Configuration – Page 3

- **Passive arming**

The system will automatically arm after 30 s the ignition key has been switched off and the driver side door has been opened and closed, so only 30 s after the driver has left the vehicle.

- **Auto Re-arming**

The system will automatically re-arm after 115 s, It has been disarmed and no one door has been opened (nobody gets on the vehicle).

- **Auto re-arming with CDL locking (only for mod. 4615-4627)**

As for auto re-arming but central door locking will be locked (if the CDL connections have been made).

- **Passive engine cranking inhibition.**

The cranking inhibition becomes active after 115 s the engine has been switched OFF. It is immediately deactivated when the Driver Card is detected or when a correct emergency PIN Code has been digit on the emergency panel. This functionality is totally independent from the other ones. With this function activated and if the system is provided with the Driver Card (optional), the cranking inhibition will be deactivated only after the Driver Card recognition.



System Configuration – Page 3

Garage mode

Remark: Activating the garage mode to the page 3 the default is Normal, to select it as Unlimited; you have to activate it to the Advanced 2 page.

Normal

This function allows to temporarily disable all protection automatic functionalities of the system. It can be used, as an example, when you need to leave the vehicle at a workshop for maintenance to avoid the automatic activation of any functionality. When the garage function is active, the driver is allowed to turn the ignition key on for 10 times (engine running).

Activation

- Open driver side door.
- Turn the ignition key ON.
- Enter the complete emergency Pin Code (4 digits) by emergency panel pushbutton.
- A flash of the direction lights and audible signal confirm the activation.

Deactivation

- Lock then unlock the vehicle with the original remote control.
- Five flashes of the direction lights and audible signals confirm the deactivation.



System Configuration – Page 3

- **Garage mode**

Remark: Activating the garage mode to the page 3 the default is Normal, to select it as Unlimited; you have to activate it to the Advanced 2 page.

Unlimited

This function allows to temporarily disable all protection automatic functionalities of the system, anti-jacking and high security system. It can be used, as an example, when you need to leave the vehicle at a workshop for maintenance to avoid the automatic activation of any functionalities. Every time the ignition key is turned on the system signals that the garage mode unlimited is activated by two flashes of blinker. With the feature activated, the system can be armed and disarmed

Activation

- Open driver side door.-
- Turn the ignition key ON.
- Enter the complete emergency Pin Code (4 digits) by emergency panel pushbutton.
- A flash of the direction lights and audible signal confirm the activation.

Deactivation

- Open driver side door.
- Turn the ignition key ON.
- Enter the complete emergency Pin Code (4 digits) by emergency panel pushbutton.
- Five flashes of the direction lights and audible signals confirm the deactivation



System Configuration – Page 3

- **Anti hi-jacking**

The anti hi-jacking is divided in Mode 1 and Mode 2 (programmed from the factory), refer to the page 7 to change the mode and function descriptions. This function helps to prevent the vehicle hi-jack while driving, taking care also to the safety of the driver. If the driver isn't recognized, the system will consider him as an unauthorized person to drive the vehicle; it will generate an alert sequence and it will not allow the engine starting after it has been switched off.

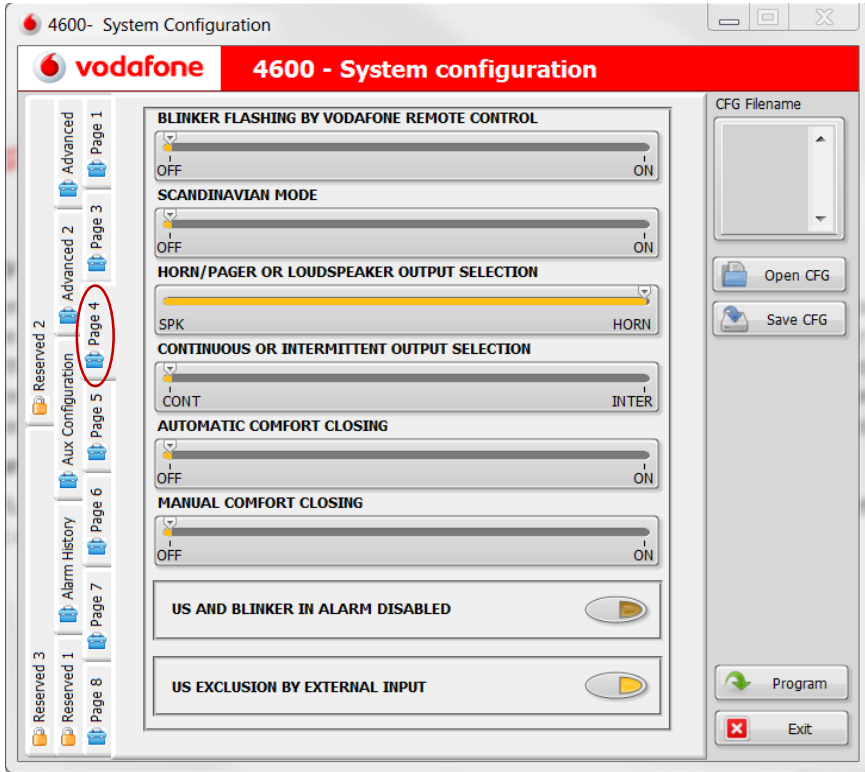
Remark: the function is as standard disabled in compliance with the European regulation. Its activation voids the CE homologation. It can be used only in the extra-European countries, if the functionality is not in conflict with the local rules.

- **Driver Recognition pushing DC and remote control**

In high security disarm the user recognition occurs by pressing the pushbutton on the driver card or the combined remote control. The passive recognition via driver card is inhibited.



System Configuration - Page 4



- **Blinker flashing by Vodafone remote control:** default Off
- **Scandinavian mode:** Default Off
- **Horn/Pager or Loudspeaker output selection:** Default Horn/Pager
- **Continuous or intermittent output selection:** Default Intermittent
- **Automatic comfort closing:** Default Off
- **Manual comfort closing:** Default Off
- **US sensitivity reduction:** Default Off
- **US exclusion by external input:** Default Off



System Configuration - Page 4

- **Direction indicators flashing by Vodafone remote control (optional)**
Activating this function the direction indicators flash at the arming/disarming of the system, using the remote control.
- **Scandinavian mode**
By activating this function the direction indicators will flash for about 135 s after the system detects an alert and sensitivity of ultrasonic sensors is reduced by approximately 50%.
- **Horn/pager or loudspeaker output selection**
Selecting "Loudspeaker" the line 4 is automatically selected as "Continue«. Selecting "Horn / Pager" line 4 must be selected as "Intermittent"
- **Continuous or intermittent output selection**
Select "Intermittent" when you have to install a horn.
Select "Continue" when you have to install a loudspeaker.

Remark: When you have to install a clacson you must never select "Continue", the continuous input for 28 s could damaged it.



System Configuration - Page 4

- **Windows manual or automatic comfort closing by Vodafone remote control (Vodafone remote control optional and only for mod. 4615-4627).**

This is a native function of the vehicle, so it is necessary to check if the vehicle provides it. You can close the vehicle and its windows keeping pressed the push-button “A” (manual way). Alternatively it can be installed a dedicated module which allows the windows closing simply pressing once the push-button “A” (automatic way).

! Warning: we recommend to perform the windows closing remaining as close as possible to the vehicle checking visually until they are completely closed.

- **Ultrasonic sensors sensitivity reduction**

Activating this function, the ultrasonic sensor sensitivity is reduced to about 50%. It is suggested for little passenger compartment vehicles.

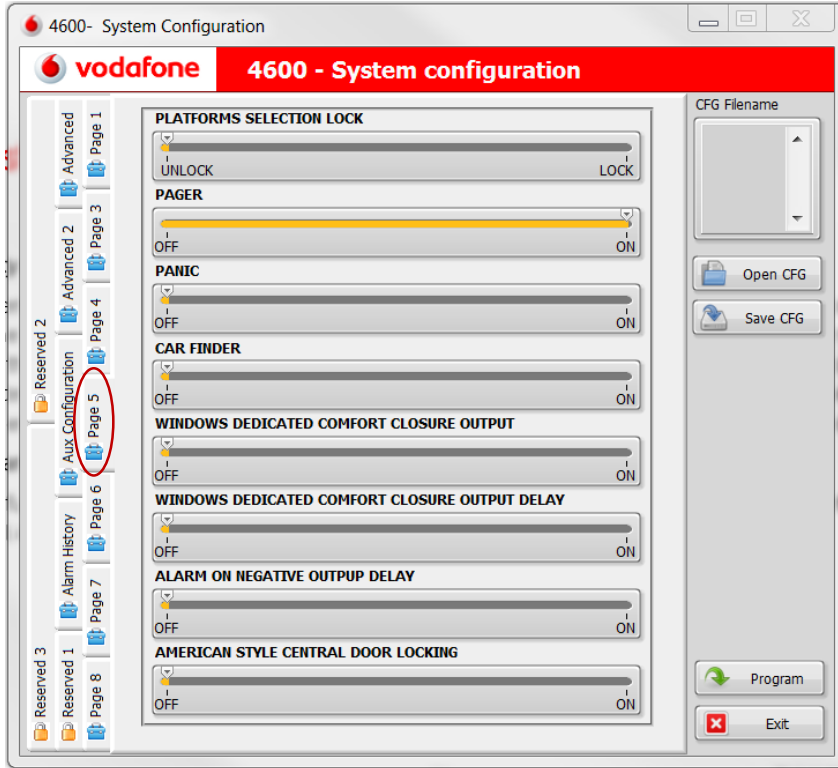
- **Ultrasonic sensors exclusion by external input**

Activating this function the ultrasonic sensors are excluded. To use this function you need to connect the Pink-White wire to the vehicle device (ex. passenger compartment fan heater).

Remark: You must not activate it if the Pink-White wire is used for PLIP application.



System Configuration - Page 5



- **Platform Selection Lock** : Default Unlock
- **Pager**: Default On
- **Panic**: Default Off
- **Car Finder**: Default Off
- **Windows Dedicated Comfort Closure Output**: Default Off
- **Windows Dedicated Comfort Closure Output Delay**: Default Off
- **Alarm On negative Output Delay**: Default Off
- **American Style Central Door Locking**: Default Off



System Configuration - Page 5

- **Platforms selection lock**

Activating this function the manual selection of the CAN or PLIP index is locked.

- **Pager negative output**

The Pager output is setted “active” from the Factory, and is activated at every alarm cycle. Refer to the Aux Configuration page.

- **Panic alarm by Vodafone remote control (Vodafone remote control optional)**

Activating this function you can generate a panic alarm for 10 s, pressing the push-button “A” of the remote control as soon as the 28 s inhibition time has elapsed, after the system has been armed.

- **Car finder (By Vodafone remote control optional)**

Activating this function you can generate the direction lights flashing and the buzzer audible signal for 10 s, pressing the pushbutton “A” of the remote control as soon as the 28 s inhibition time has elapsed, after the system has been armed.



System Configuration - Page 5

- **Windows dedicated comfort closure output (Refer to Aux Configuration page)**

Activating this function you can generate a negative 24 s output which allows the windows closure when the system arms.

Remark: Refer to the Aux Configuration page

- **Windows separated comfort closure output delay**

Activating this function the functionality described on above step is delayed 2s.

- **Alarm on negative output delay**

Activating this function the negative output for the external module control is delayed 2 s after the system has been armed.

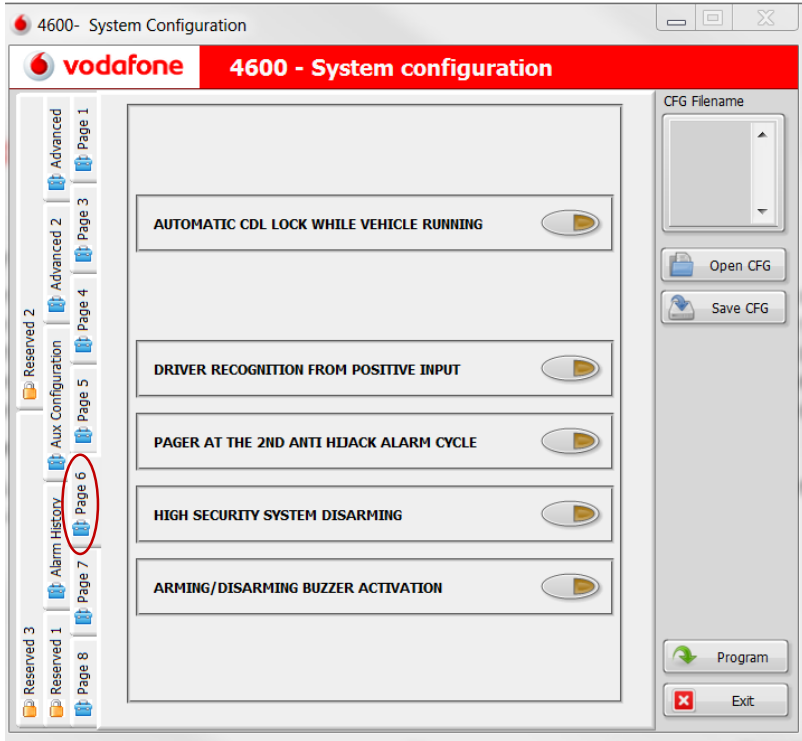
- **American style central door locking (By Vodafone remote control optional)**

Activating this function and pressing the remote control “B” push-button, the system disarms and the driver door unlocks, a further pressure of “B” push-button unlocks all doors.

Remark: Refer to the Aux Configuration page



System Configuration - Page 6



- **Automatic CDL Lock While Vehicle Running:** Default Off
- **Driver Recognition From Positive Input:** Default Off
- **Pager At The Second Anti-Hijacking Alarm Cycle:** Default Off
- **High Security System Disarming:** Default Off
- **Arming/Disarming Buzzer Activation:** Default Off



System Configuration - Page 6

- **Automatic CDL lock while vehicle running**

If the vehicle is not already provided with this functionality, overtaking the speed of 10 km/h the system locks the doors. If you drive at lower speed (between 3 and 10 Km/h) the system locks the doors after 10 s. By turning the ignition key off the vehicle doors automatically, unlock. To use this function you have to connect the cdl control wires to the cdl system of the vehicle and the Pink-Black wire to the odometer wire of the car.

- **Driver recognition from positive input**

Activating this function, the driver is recognized from the system by the pressure of a push-button hidden in the vehicle. To use this function you have to connect the Pink-White wire. You must not to activate it if the Pink-White wire is used by PLIP application.

- **Pager output activated at the second alarm cycle during anti hi-jack**

Activating this function the pager output activates at the second alarm cycle.



System Configuration - Page 6

- **High security system disarming**

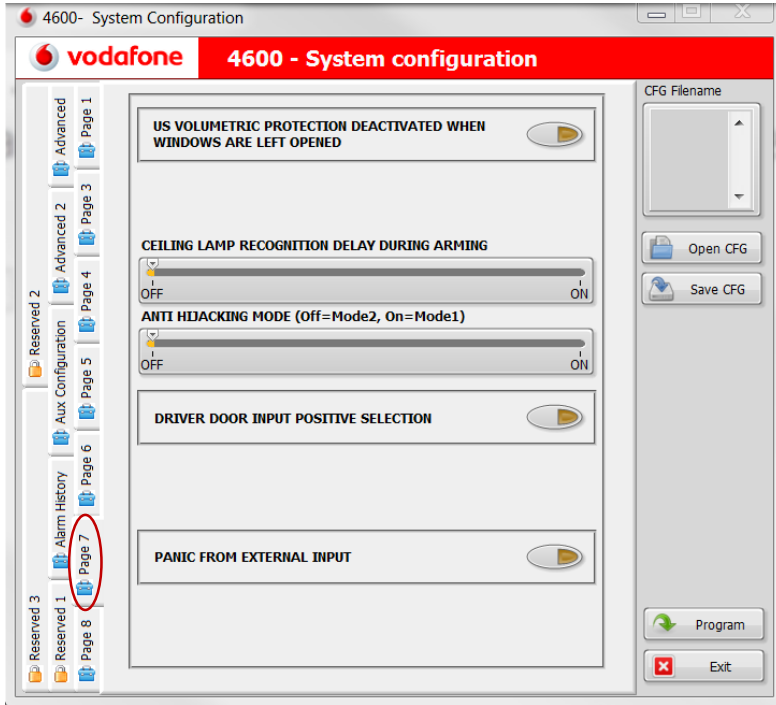
Pressing the central door locking unlock push-button of the original remote control, the system delays for 30 s the detection of the perimetric inputs, boot and ultrasonic sensors to allow the owner recognition. The owner is recognized by the system in three different ways: digiting the first two digits of the Pin Code on the control panel, pressing an external button or by the Driver Card if it is stored. If recognized, the system disarms. If the owner is not recognized, opening one of the doors or the boot, the system generates an alert after the 30 s are elapsed.

- **Arming/Disarming buzzer activation**

Activating this function, the buzzer sounds when the system is armed/disarmed. The buzzer volume is setted from Factory at level 4. To modify the buzzer volume, follow the procedure on page 1.



System Configuration - Page 7



- **US volumetric protection deactivated when the windows are left opened:** Default Off
- **Ceiling lamp recognition delay during arming:** Default Off
- **Anti-Hijacking Mode:** Default: Of (Off= Mode2, ON = Mode1).
- **Driver door input positive selection:** Default Off
- **Panic from external input:** Default Off



System Configuration - Page 7

- **US volumetric protection deactivated when windows are left opened**

Activating this function, the automatic ultrasonic sensors deactivation at the arming It is deactivated if the windows are left opened.

- **Ceiling lamp recognition delay during arming**

Activating the function, the ceiling lamp is detected 7 s after the system has been armed, to avoid the error message before its shutdown. The delay time can be adjusted at the advanced page.

The function is active for both polarities (Negative Blue-Pink wire) (Positive Pink-Black wire).

Activate the line 5 of this page to use the positive input.



System Configuration - Page 7

Anti Hi-jacking modes

Mode 1

Anti Hi-jacking activation at the door opening and single driver Card recognition. During the normal usage of the vehicle the owner is recognized by the system in three ways: by entering the first two Pin Code digits on the emergency panel, pressing an external button (Activating the feature to the point 7.23) or by the Driver Card if it is stored.

The owner must be recognized by the system every time the ignition key is switched on or when, with the ignition key on, the driver door is opened. If the recognition doesn't happen within 60 s the LED of the system starts to flash quickly, reporting the failed recognition for further 30 s. Expired this time, the system generates an alert sequence with the engine on or off, for which the sequence may occur while driving. The engine cranking inhibition becomes active when the ignition key is off, making it impossible the engine cranking. To exit the anti hi-jack function, close the door and enter the four digits of the Pin Code or press the external button or by the Driver Card recognition, if it is switched off, to deactivate the anti hi-jacking press the pushbutton of the Driver Card to allow the recognition.

! Warning: to temporarily deactivate the anti hi-jack function (Driver Card broken or flat battery), entering the two first digits of the Pin Code. The function will become active again at the driver door opening when the ignition key is on or by turning the ignition key OFF and ON.



System Configuration - Page 7

Anti Hi-jacking modes

Mode 2

Anti Hi-jacking activation at the door opening and closing and continuous Driver Card recognition. During the normal usage of the vehicle the owner is recognized by the system in three ways: by entering the first two Pin Code digits on the emergency panel, pressing an external button (Activating the feature to the point 7.23) or by the Driver Card if it is stored. The system every time the ignition key is switched on or when, with the ignition key on, the driver door is opened and closed must recognize the owner. If the recognition doesn't happen within 60 s the LED of the system starts to flash quickly, reporting the failed recognition for further 30 s. Expired this time, the system generates an alert sequence with the engine on or off, for which the sequence may occur while driving. The engine cranking inhibition becomes active when the ignition key is off, making it impossible the engine cranking. To exit the anti hi-jack function, enter the four digits of the Pin Code or press the external button or by the Driver Card recognition, if it is switched off, to deactivate the anti hi-jacking press the push-button of the Driver Card to allow the recognition.

! Warning: to temporarily deactivate the anti hi-jack function (Driver Card broken or flat battery), entering the two first digits of the Pin Code. The function will become active again when the driver door is opened and closed, when the ignition key is on or by turning the ignition key OFF and ON.



System Configuration - Page 7

- **Input selection of the positive driver's door**

This function allows you to select the Pink-Black wire as positive input.

By activating this function, the automatic CDL lock while vehicle running must not be used.

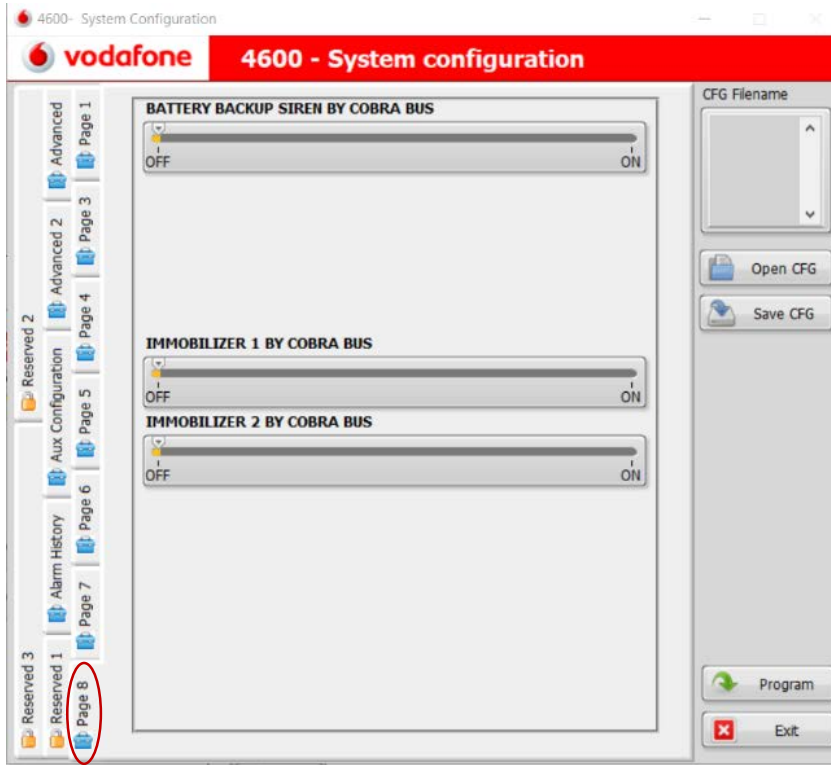
- **Panic alarm from external positive input.**

Activating this function there is a panic alarm for 10 s each time the system detects a positive signal on the Pink-White wire; after the inhibition period of 28 s.

Remark: you must not activate this feature if the Pink-White wire is used by PLIP application



System Configuration - Page 8

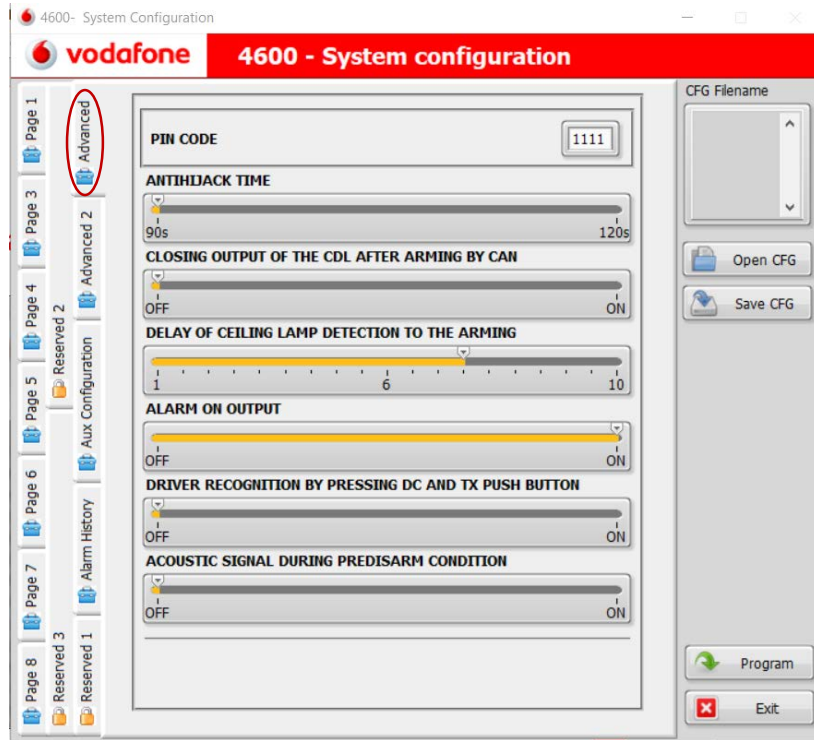


- **Battery back-up siren by Cobra Bus:** Default Off
- **Immobilizer 1 By Cobra Bus:** Default Off
- **Immobilizer 2 By Cobra Bus:** Default Off

! Warning: if one or more modules are connected to the Cobra Bus, if one of them has been disconnected, the system will report the missed module when arming with 8 to 12 flashings of the indicator lights and corresponding audible signals.



System Configuration - Advanced



- **Pin Code:** Read by connected product
- **Anti Hi-jacking time:** Default
- **Closing output of the CDL after having armed by CAN:** Default Off
- **Delay of ceiling lamp detection to the arming:** Default 7 s
- **Alarm ON output:** Default ON
- **Driver recognition by pressing DC or TX pushbutton:** Default Off
- **Acoustic signal during pre-disarm condition:** Default Off



System Configuration - Advanced

- **Pin Code**

The Pin Code read from the connected product, It is shown on the square. If you need to modify it, you have to digit the new desired four numbers. Warning: The number 0 cannot be used and keep in mind that you must ever use four numbers

- **Anti Hi-jacking time**

The anti hi-jacking activation time can be increased from 90 s to 120 s.

- **Closing output of the CDL after having armed by CAN**

Activating this feature, You get a negative output from the closing CDL control wire (Only for 4615 and 4627)

- **Delay of ceiling lamp detection to the arming**

The detection time of the ceiling lamp can be increased or decrease. The analogic wire (Blue-Pink negative input or Pink-Black positive input after having activated the line 5 of the page 7) must be connected to the ceiling lamp.

- **Alarm ON output**

After having armed the system, you get a negative output from the Brown wire , which can be used to control the external module.



System Configuration - Advanced

- **Driver recognition by pressing DC or TX pushbutton**

After having activated this feature the system can be disarmed by pressed the pushbutton of the Driver card or the Vodafone remote control when the High security system disarming is activated.

This feature can avoid the relay attack.

- **Acoustic signal during pre-disarming condition**

After having activated this feature, you get an acoustic signal when the system is in pre-disarming mode and search the driver card when the High security system disarming is activated.

(It is available for both following features, Standard Driver Card recognition or Driver recognition by pressing DC or TX pushbutton).



System Configuration – Advanced 2



- **Garage mode type:** Default : Normal (Refer the descriptions to page 3)
- **Ignition key ON detection only by analogic wire:** Default OFF
- **Disable 868 Mhz transmission:** Default : Disable



System Configuration – Advanced 2

Ignition key ON detection only by analogic wire

This function allows to detect the ignition ON only by analogic wire after its activation and after having performed the procedure. The detection from the CAN network will be deactivated.

Activation

- Connect the Green-Red wire to the +15/54-ignition wire of the car.
- Turn on the Ignition key.
- The Ignition key On by CAN network is deactivated, It will be detected only by analogic wire

Deactivation

- Disconnect the Green-Red wire from the +15/54ignition wire of the car.
- Disconnect the power supply of the system.
- Re-connecting the power supply to the system
- The Ignition key On by CAN network is re-activated.

Disable 868 Mhz transmission

- This functionality inhibits the transmission 868 MHz (wireless siren) to obtain the best radio frequency reception 433Mhz (driver card).



System Configuration – AUX Configuration

4600 - System Configuration

vodafone 4600 - System configuration

Page 1
Page 3
Page 4
Page 5
Page 6
Page 7
Page 8
Reserved 3
Reserved 1
Reserved 2
Alarm History
Aux Configuration

CFG Filename

Open CFG
Save CFG

Program
Exit

ALARM ON OUTPUT ON AUX N°...

AUX1 AUX2 AUX3 AUX4

PAGER OUTPUT ON AUX N°...

AUX1 AUX2 AUX3 AUX4

WINDOWS DEDICATED COMFORT CLOSURE OUTPUT ON AUX N°...

AUX1 AUX2 AUX3 AUX4

AMERICAN STYLE CDL OUTPUT ON AUX N°...

AUX1 AUX2 AUX3 AUX4

WIRE ASSIGNMENTS LEGEND:

AUX1 = BROWN AUX2 = VIOLET/WHITE
AUX3 = ORANGE/WHITE AUX4 = YELLOW/WHITE

- **Alarm On output on AUX n°:** Default Aux 1
- **Pager output on AUX n°:** Default AUX 3
- **Windows dedicated comfort closing output on AUX n°:** Default AUX 2
- **American style output on AUX n°:** Default AUX 2



System Configuration – AUX Configuration

It is possible to move the features from standard AUX to other Aux. Pay attention to the Alarm On output because It is ever activated, if you want to move to another AUX the other features must be deactivated before.

! Warning: The 462X and 469X series are not equipped with the Aux2 and Aux3 outputs.

- The Aux4 output can be used only if the application doesn't provide the logic or the level blinker control. The picture shows the factory values.
- The features can be directed on the desired Aux.
- Be careful not to move more features active on the same Aux.

AUX	461X	462X	469X
1	Brown	Brown	Brown
2	Orange-White	Not available	Not available
3	Violet-White	Not available	Not available
4	Yellow-White	Yellow-White	Yellow-White



System Configuration – Alarm History

4600- System Configuration

vodafone 4600 - System configuration

COUNTERS

0	DRIVER DOOR	0	TAMPER SIREN
0	US/EXTERNAL US	0	GENERIC MODULE
0	BONNET	0	MWAVE 1/2
0	IGN		
0	BOOT		
0	EXTERNAL SENSOR		
0	OTHER DOORS		

LAST EVENTS

	EVENT
1 (LATEST)	
2	
3	
4	
5	
6	
7	

CFG Filename

Open CFG

Save CFG

Program

Exit

Erase Alarm History

- The system can store 16 events, the latest event is the number 1, when an event will be added the 16th event will be deleted from the last events» but It is still available in the «counters».
- **Driver door**
- **US/External US**= Internal US sensors or External US sensors module by Cobra Bus
- **Bonnet**
- **IGN**= Ignition ON
- **Boot**
- **External Sensor**= Microwave or Level monitor by analog input
- **Other doors**= Passengers doors
- **Tamper siren**
- **Generic module**= Level monitor by Cobra BUS
- **Mwave 1 e 2**= Microwave 1 e 2 by Cobra BUS



System Configuration – Alarm History

4600- System Configuration

vodafone 4600 - System configuration

CFG Filename

COUNTERS

0 DRIVER DOOR 0 TAMPER SIREN

0 US/EXTERNAL US 0 GENERIC MODULE

0 BONNET 0 MWAVE 1/2

0 IGN

0 BOOT

0 EXTERNAL SI

0 OTHER DOOR

Alarm history successfully erased.

OK

LAST EVENTS

EVENT
1 (LATEST)
2
3
4
5
6
7

Erase Alarm History

Open CFG

Save CFG

Program

Exit

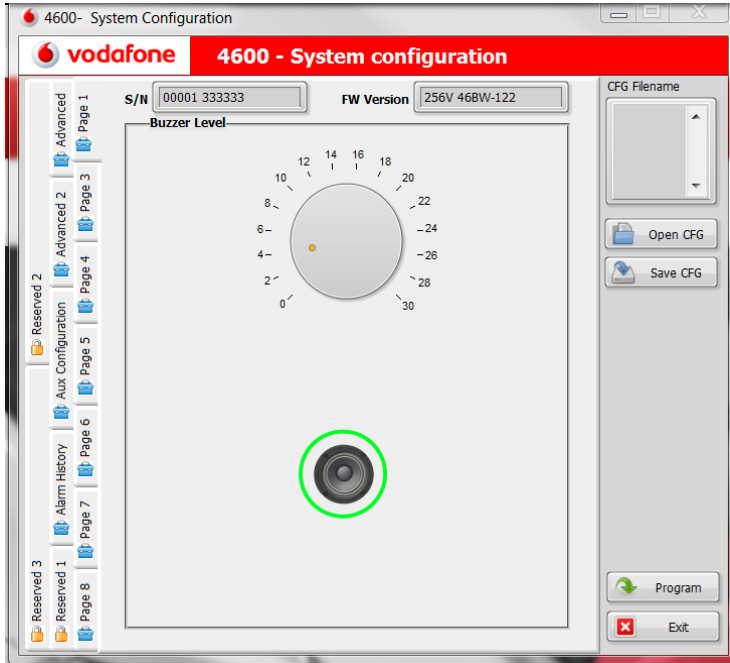
1. Clicking ON «Erase alarm memory» you can erase all events stored in the system.
2. Click «OK» to proceed with the procedure



HOW TO SAVE OR UPLOAD A .CFG FILE



System Configuration - How to save or upload a .cfg file

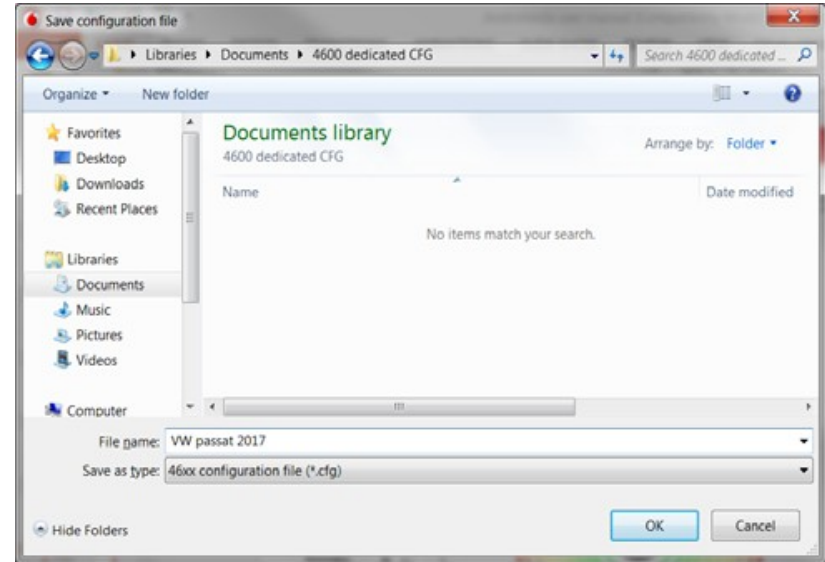
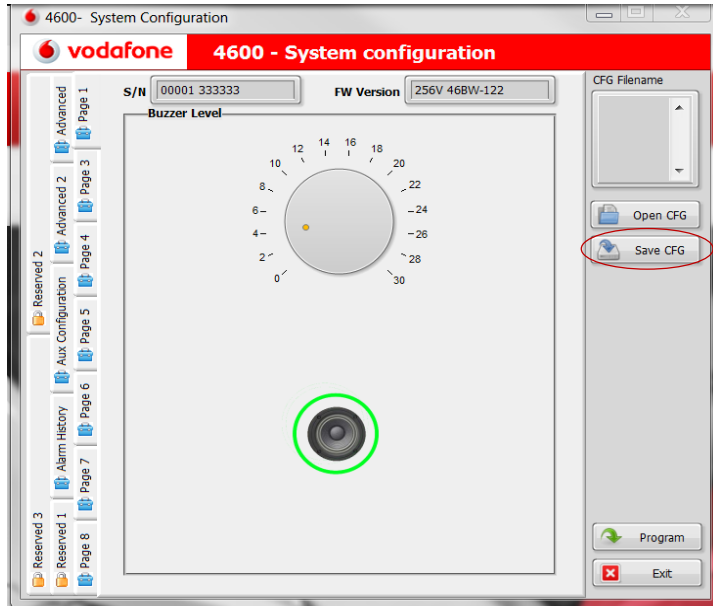


After having modified any features in any available page, It is possible to program the connected system to click on «Program».

- You can also save the «configuration file» on your PC clicking on «Save CFG».
- To upload a saved cfg file from your computer you have to click on «Open CFG».



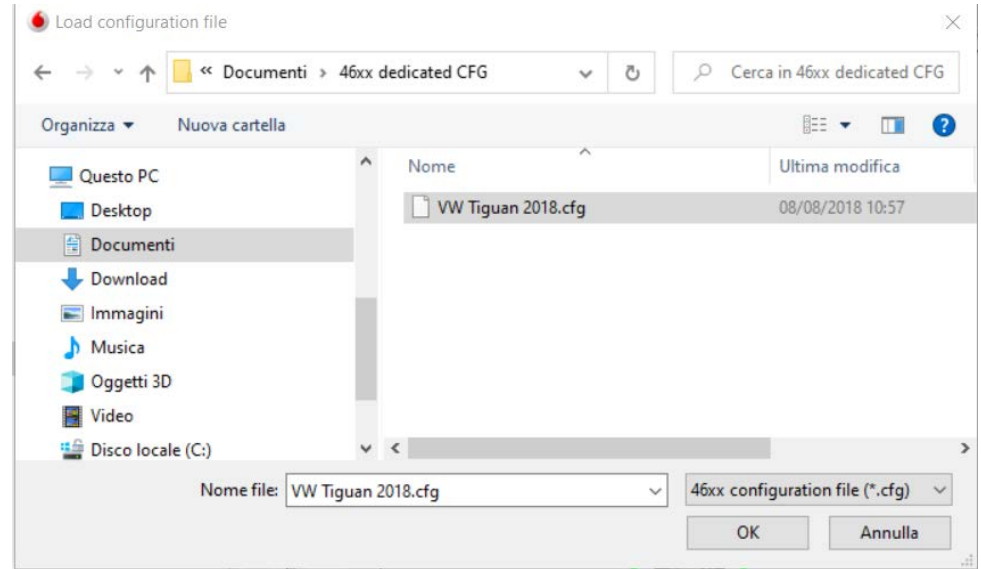
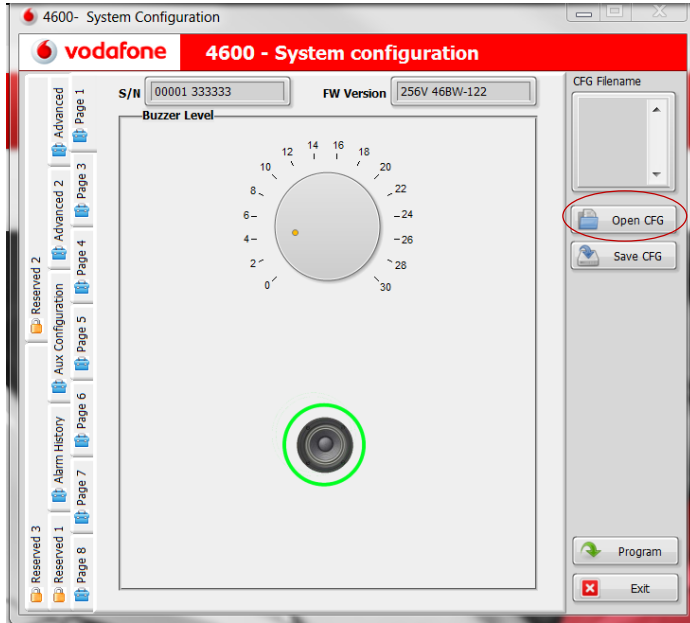
System Configuration - How to save or upload a .cfg file



Click on «Save CFG» and save your cfg on your computer. You can use the saved configuration as dedicated customer request.



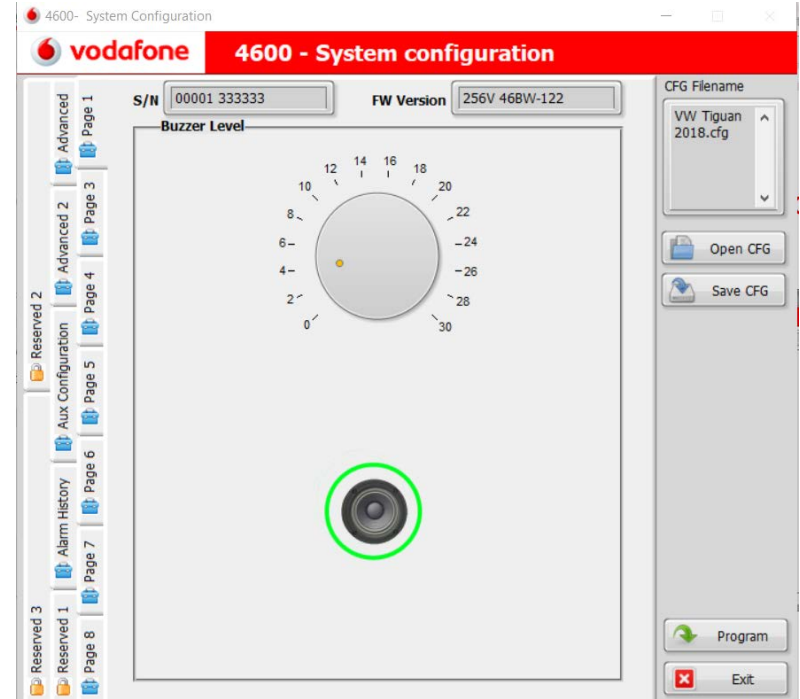
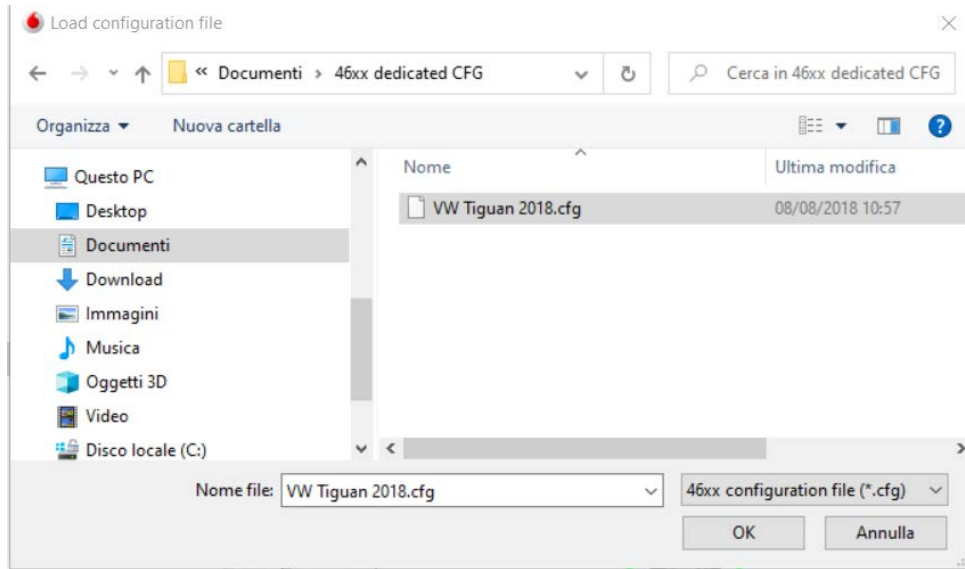
System Configuration - How to save or upload a .cfg file



Click on «Open CFG» to upload the saved cfg from your computer and click on to «Program» to program the connected system



System Configuration - How to save or upload a .cfg file



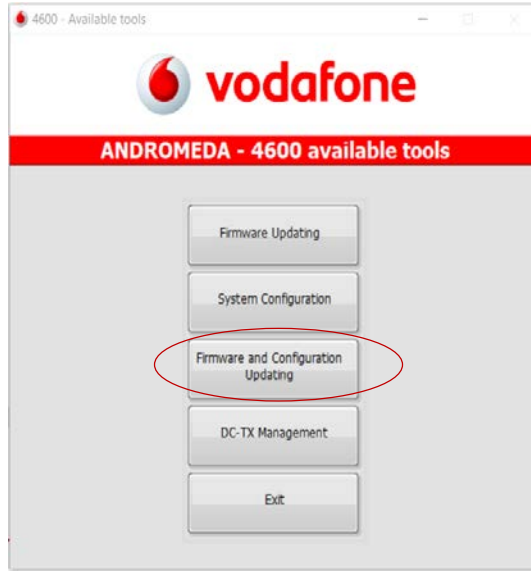
Click on the file and then click on «Program» to program the connected system



FIRMWARE AND CONFIGURATION UPDATING



Firmware and configuration Updating



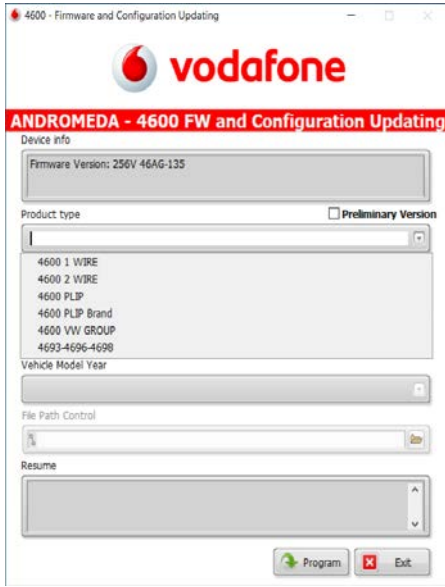
This functionality allows to select the firmware and the CFG in a single page of Andromeda and subsequently to program the product in sequence



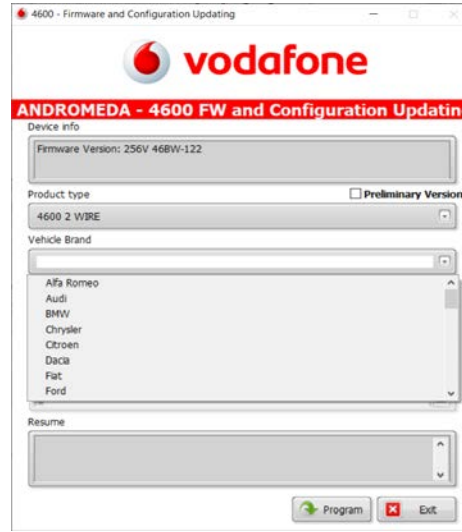
Andromeda reads the stored firmware version



Firmware and configuration Updating



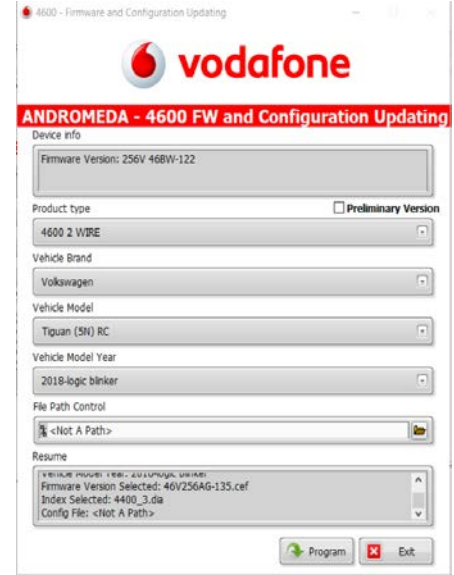
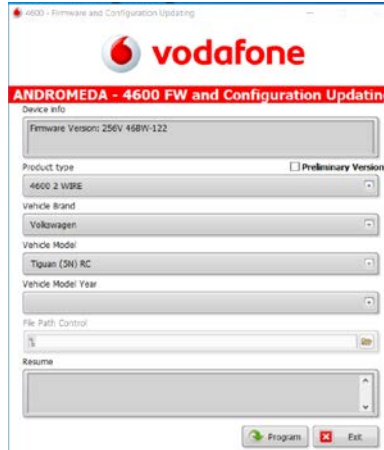
Open the drop menu and choose the product type



Open the drop menu and choose the Vehicle brand



Firmware and configuration Updating

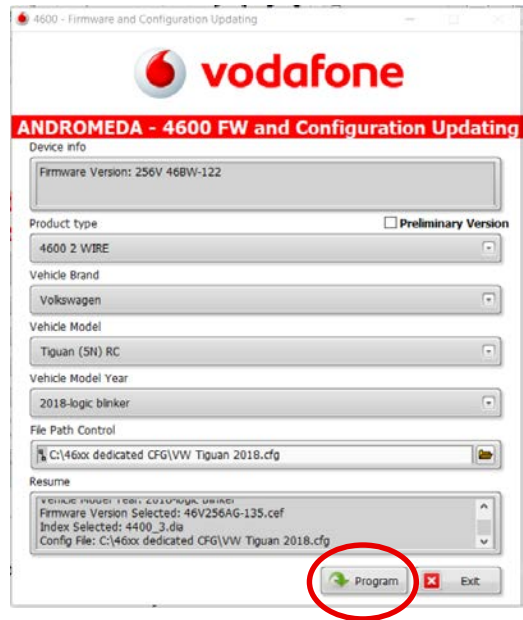
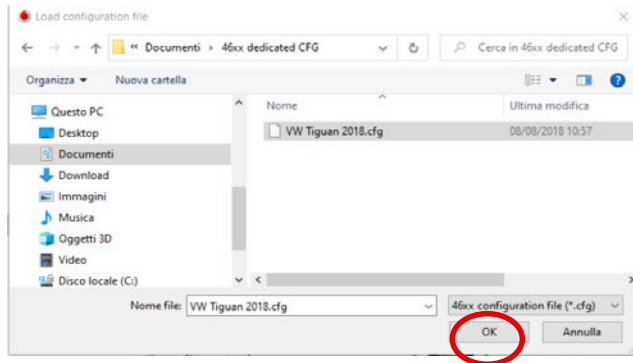
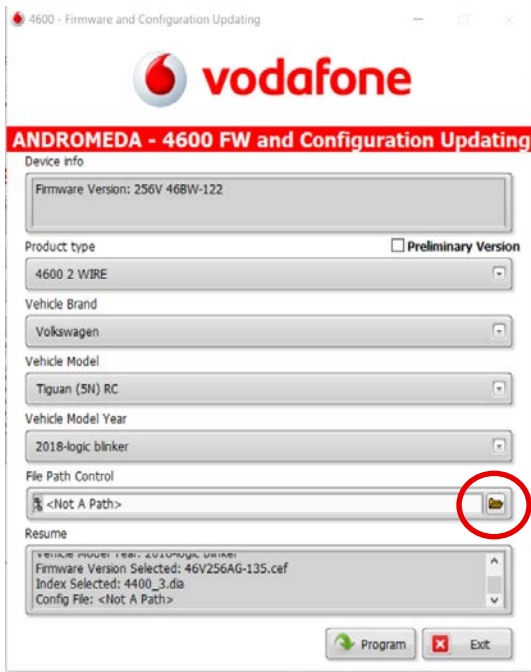


Open the drop menu and choose the vehicle model

Open the drop menu and choose the vehicle model year.
Andromeda shows you all choices in the resume window.
Click on program to proceed with installation



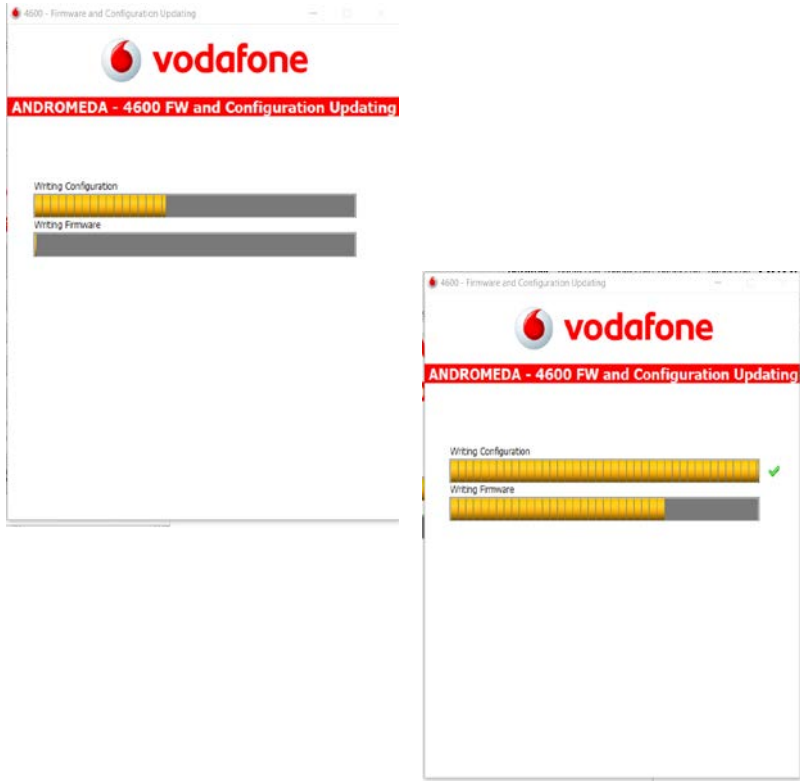
Firmware and configuration Updating



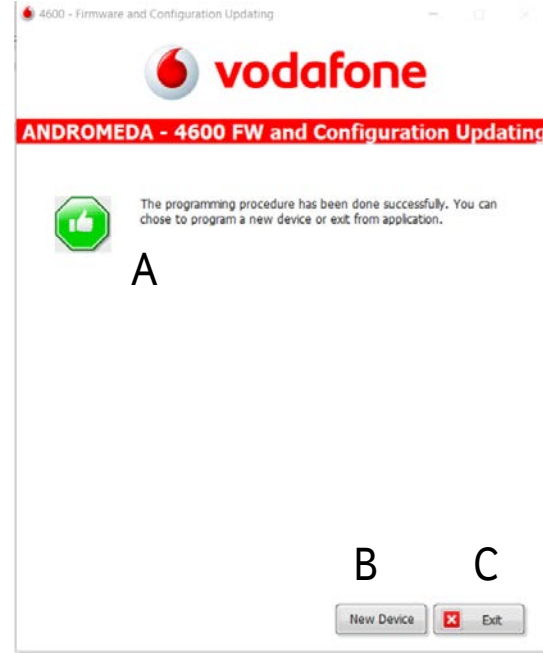
- Click on «Folder» to upload the saved cfg from your computer
- Click on to «Program» to program the connected system



Firmware and configuration Updating



Andromeda shows you the status of the installation



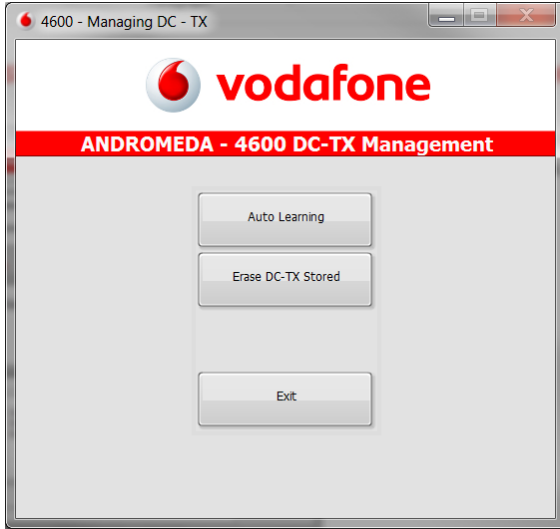
- (A) Andromeda confirms the programming procedure has been done successfully.
- (B) Click on «New Device» if you need to program a new product with the same firmware.
- (C) Click on «Exit» to leave the programming page



DC-TX MANAGEMENT



DC-TX management



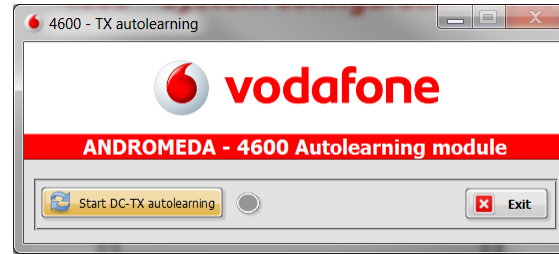
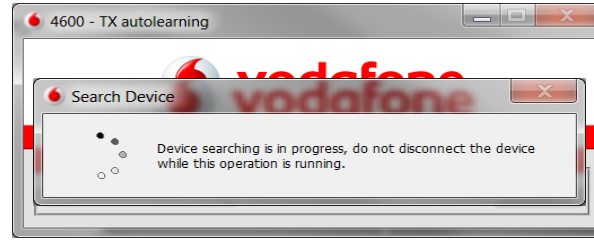
Features available on the 4600 DC-TX management page:

Auto learning: You can store some Vodafone driver cards or remote controls.

Click on «Auto learning» to continue.

Erase DC-TX stored: You can erase the Vodafone driver cards or remote control stored before.

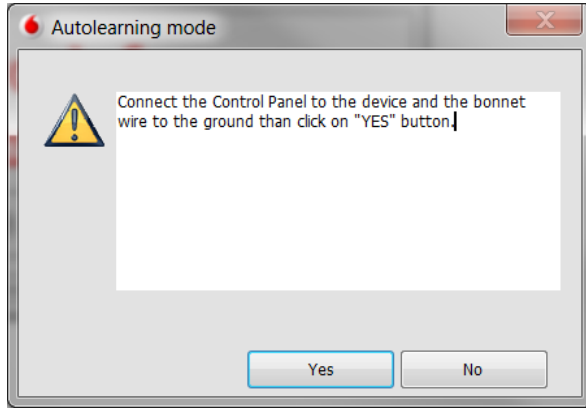
Exit: Click on «Exit» to leave 4600 DC-TX management



Click on «Start DC-TX autolearning» to proceed or «Exit» to go back to 4600 DC-TX management page



DC-TX management



Auto learning .

You have to connect the led control panel to the system and the Blue wire to the ground, click on «Yes» to proceed



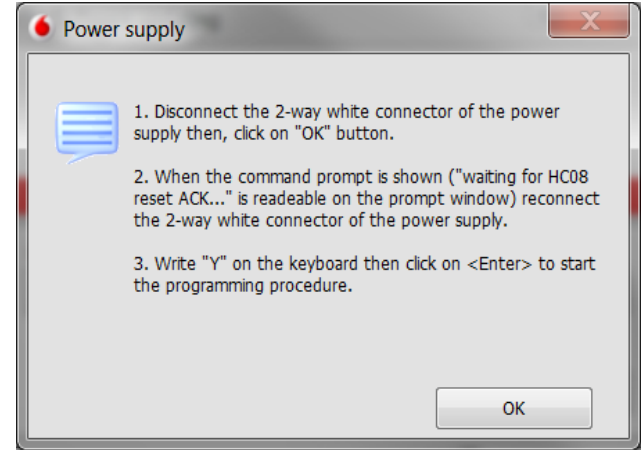
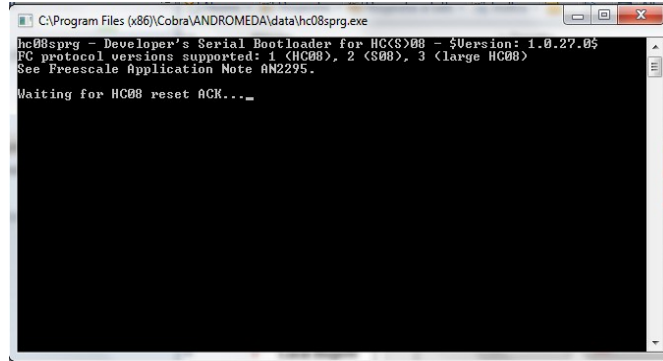
- After clicking «Yes», you have 30 seconds to store up to 4 driver cards or remote controls.
- Press and hold the button of driver card or remote control for about 2 seconds.
- The system will confirm after 5 seconds with a flashing led that It has been stored, proceed with the same procedure for the other devices to be stored one at a time, for each stored device the system confirms with a flashing led after 1 s for each stored



5365 SOFTWARE UPDATING



5365 Software updating



Click "OK"



5365 Software updating

```
C:\Program Files (x86)\Cobra\ANDROMEDA\data\hc08sprg.exe
hc08sprg - Developer's Serial Bootloader for HC(S)08 - $Version: 1.0.27.0$
FC protocol versions supported: 1 (HC08), 2 (S08), 3 (large HC08)
See Freescale Application Note AN2295.

Waiting for HC08 reset ACK...received 0xfc (good).
Bootloader protocol version: 0x02 (read command supported)
Bootloader version string: AW16
System device ID: 0x012 [unknown [ID too high]] rev. 1
Number of memory blocks: 1
Memory block #1: 0xC000-0xFDCB
Erase block size: 512 bytes
Write block size: 64 bytes
Original vector table: 0xFFCC-0xFFFF
New vector table: 0xFDCC-0xFDFF

S19 image will not fit into available memory (at address 0x0220)!

Are you sure to program part? [y/N]: _
```

Digit «Y» and then click on «Enter» to start the installation procedure.

```
C:\Program Files (x86)\Cobra\ANDROMEDA\data\hc08sprg.exe
hc08sprg - Developer's Serial Bootloader for HC(S)08 - $Version: 1.0.27.0$
FC protocol versions supported: 1 (HC08), 2 (S08), 3 (large HC08)
See Freescale Application Note AN2295.

Waiting for HC08 reset ACK...received 0xfc (good).
Bootloader protocol version: 0x02 (read command supported)
Bootloader version string: AW16
System device ID: 0x012 [unknown [ID too high]] rev. 1
Number of memory blocks: 1
Memory block #1: 0xC000-0xFDCB
Erase block size: 512 bytes
Write block size: 64 bytes
Original vector table: 0xFFCC-0xFFFF
New vector table: 0xFDCC-0xFDFF

S19 image will not fit into available memory (at address 0x0220)!

Are you sure to program part? [y/N]: y
Memory programming: W 0xC980 16%
```

The software is in updating





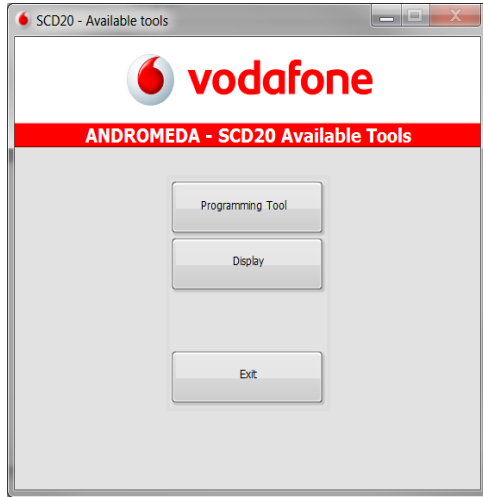
SCD20 CAN TOOLS



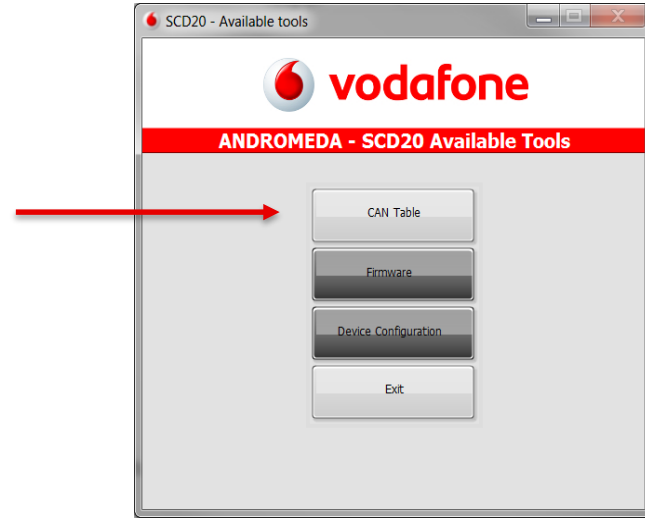
PROGRAMMING TOOL



Programming tool



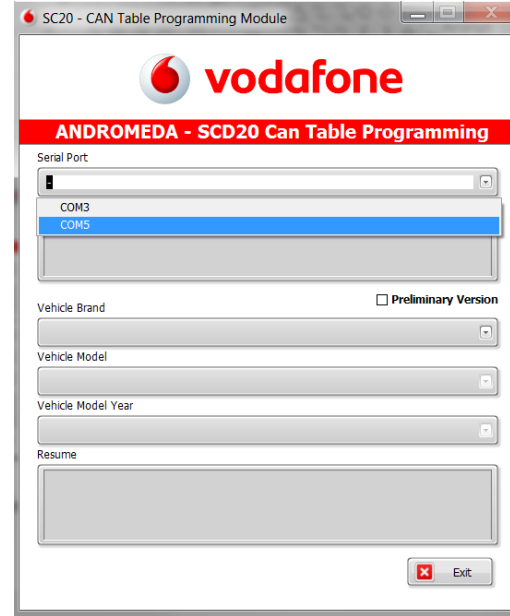
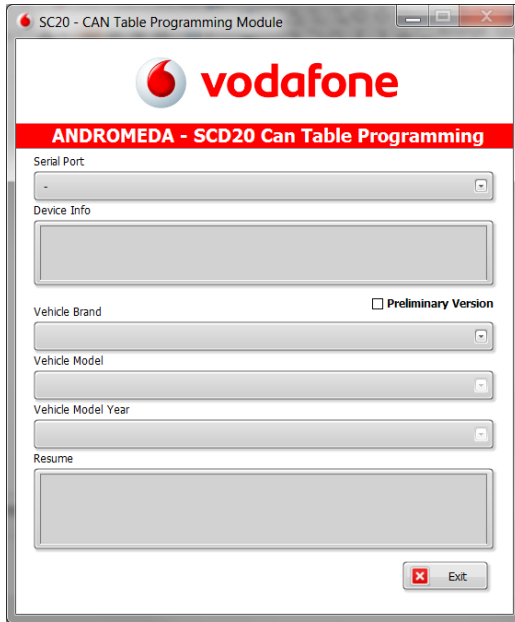
Click on «Programming tool» to proceed



Click on «CAN Table» to proceed.



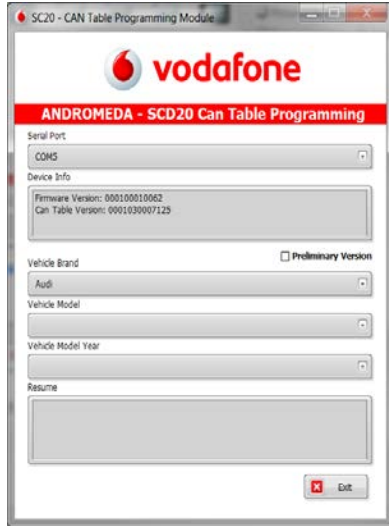
Programming tool



Open the drop menu and select the available Com port, if the selection is correct, the stored firmware and CAN table version are shown



Programming tool



Open the drop menu and select the «Vehicle Brand» available



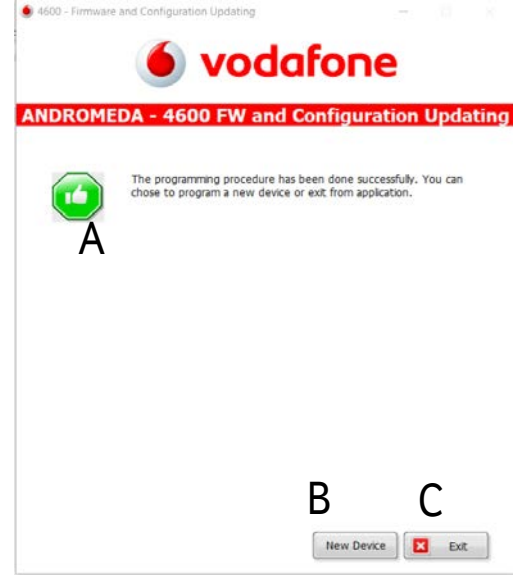
Open the drop menu and select the «Vehicle Model».



Programming tool



Open the drop menu and select the «Vehicle Model Year» and click on «Program».



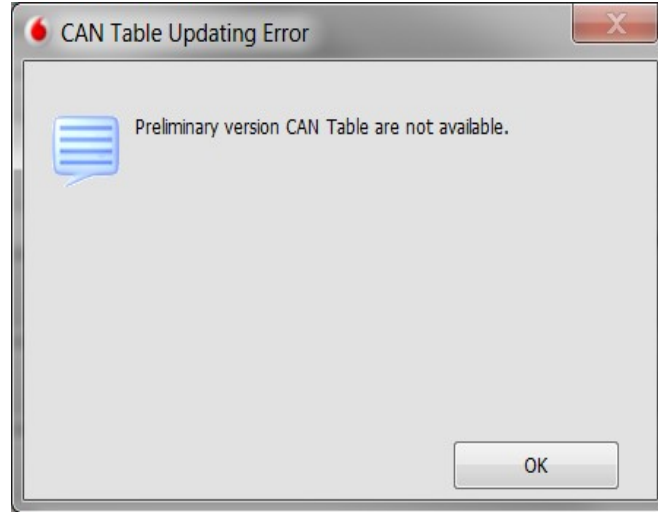
- (A) Andromeda confirms the programming procedure has been done successfully.
- (B) Click on «New Device» if you need to program a new product with the same firmware.
- (C) Click on «Exit» to leave the programming page



PRELIMINARY VERSION



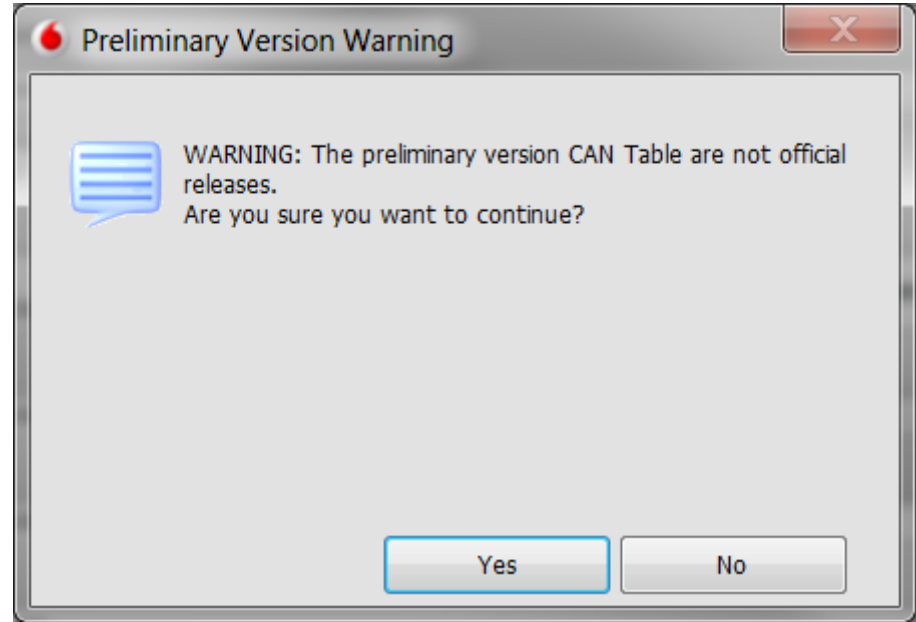
Programming tool



After having read the firmware version, you can select the «Preliminary Version», if there are no any firmware available Andromeda shows you an error. Click «OK» to leave the «Preliminary Version» page



Programming tool



If a preliminary version is available, Andromeda informs you that the firmware are not official releases. Click on «Yes» to proceed



Programming tool



Open the drop menu and select the «Vehicle Brand» available.



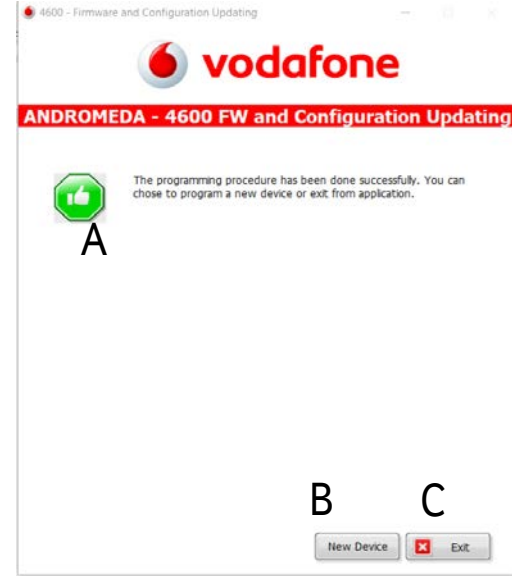
Open the drop menu and select the «Vehicle Model».



Programming tool



Open the drop menu and select the «Vehicle Model Year» and click on «Program».



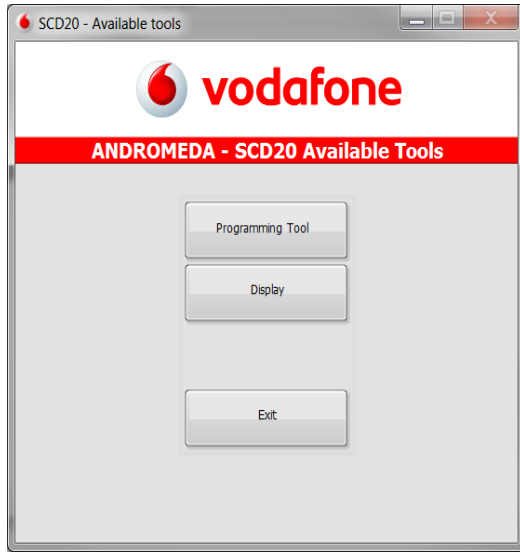
- (A) Andromeda confirms the programming procedure has been done successfully.
- (B) Click on «New Device» if you need to program a new product with the same firmware.
- (C) Click on «Exit» to leave the programming page



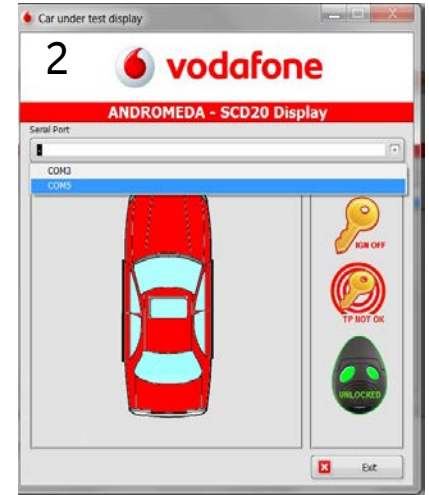
DISPLAY



Display



Click on «Display» to proceed.



Open the drop menu and select the available "Com" port



Display



The «Display» allow you to check some feature by CAN network as:

- ✓ System arming System disarming
Ignition key Off Ignition key ON
- ✓ Transponder recognition KO Transponder
recognition OK Driver door recognition
- ✓ Rear driver door recognition
- ✓ Front passenger door recognition
- ✓ Rear passenger door recognition Bonnet recognition
- ✓ Boot recognition



Display



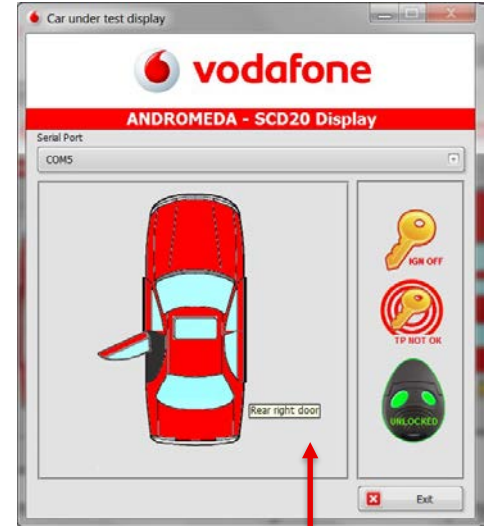
- Lock the central door locking by pressing the closing pushbutton on the original remote control. The color of the remote control becomes red, It means the system is armed.
- Unlock the central door locking by pressing the closing pushbutton on the original remote control. The color of the remote control becomes green, It means the system is disarmed.



Display



Open the driver door and check on the display if it is recognized



Open the rear driver and check on the display if it is recognized



Display



Open the rear passenger door and check on the display if it is recognized



Open the front passenger door and check on the display if it is recognized



Display



Open the rear passenger door and check on the display if it is recognized



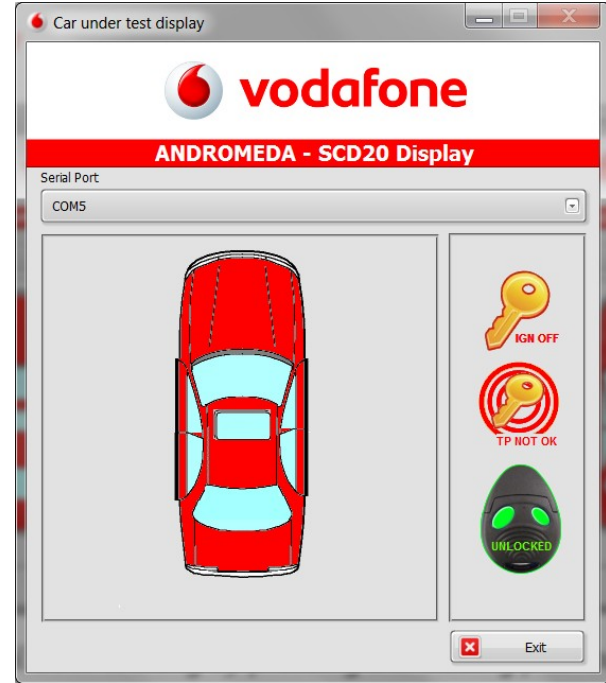
Open the front passenger door and check on the display if it is recognized



Display



Turn the ignition on and check on the display if the ignition ON and Transponder OK (Only if It is managed by CAN software) are recognized, after having checked them turn the ignition off and take off the ignition key



Click on «Exit» to leave the Display tool





vodafone
business